

TULUM | Q. ROO | MX

Un producto de Guida Developments comercializado por:



Amira District

Tulum Condos



*The closest condos
to the beach in Tulum*





Amira
District

Discover Tulum and fall in love with the Caribbean.

A relaxed and carefree environment, where you can feel the an incredible vibe, are the perfect words to describe this Mexican Magic Town in the southern part of the Riviera Maya, which is becoming increasingly popular for its atmosphere and Mayan vestiges.

Dare to venture into Mexico's most chic destination.





Amira
District

*A unique and
sustainable project
with nature.*

Amira District is an organic architectural complex in harmony with nature, which makes it one of the most attractive real estate projects in this privileged area of the Mexican Caribbean, thanks to its values and vision for the future, focused on integrating them into the lifestyle and urban design of Tulum.

If you can dream it, you can own it.

TULUM | Q. ROO | MX



Amira
District

1 and 2 bedrooms condos

At Amira District, attention has been paid to the smallest details to provide its owners with a captivating experience through spaces and environments designed to rest as if you were in a suite of a 5 star resort.

The objective of the design of each of the apartments was to achieve a balance between mind, body and soul.



If you can dream it, you can own it.

TULUM | Q. ROO | MX



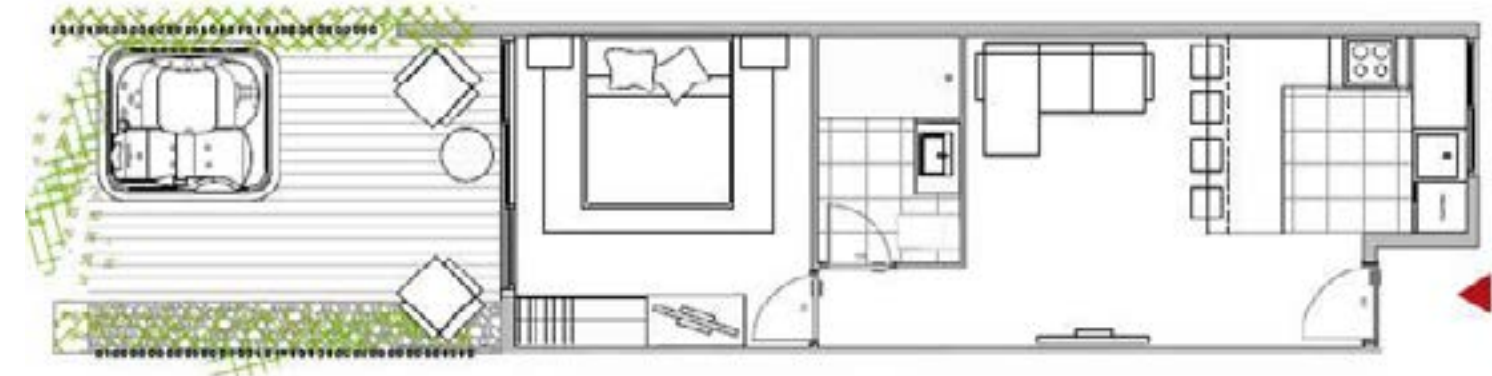
Floorplans

Each condominium seeks to emulate the balance between mind and soul, based on biomimicry. This seeks to offer the inhabitants a unique space, which serves as an escape from everyday life and allows maximum relaxation in harmony.



1 Bedroom

Interior: **40.20 m²**
 Terraza: **5.52 m²**
 Total: **45.75 m²**



1 Bedroom garden

Interior: **40.20 m²**
 Terraza: **17.55 m²**
 Total: **57.75 m²**



2 Bedrooms

Interior: **83.90 m²**
 Terraza: **15.34 m²**
 Total: **99.24 m²**

***Condo with lock-off**

*The measurements of the floorplans may vary slightly according to the level where it is located.

Floorplan Penthouse

3 Bedrooms

Interior: **152.13 m²** Terraza: **57.07 m²** Total: **209.2 m²**



*The measurements of the floorplans may vary slightly according to the level where it is located.

Amira
District

*You will be 280 m
from the best beach
in the Caribbean.*

Amira District is in the perfect location, the closest development in Tulum to the beach and surrounded by the natural beauty of the Mayan jungle.

Among its amenities are a two-year membership to Grupo Giada's Beach Club, luxury community spaces inserted in a jungle environment, such as restaurant, kids club, laundry and bar.



If you can dream it, you can own it.

TULUM | Q. ROO | MX



Start at \$173,040 usd

Reserve with \$5,000 USD

Down payment	Final Payment	Discount
<i>30%</i>	<i>70%</i>	
<i>50%</i>	<i>50%</i>	<i>10%</i>
<i>80%</i>	<i>20%</i>	<i>20%</i>

*Final payment at your condo delivery.



