

CORAZÓN
DE
PLAYA

URBAN RESIDENCES

WE CAPTURE THE
essence
OF PLAYA DEL CARMEN

Its constantly transforming urban image, its Mayan heritage, the beautiful sunrises and sunsets, and the majestic Caribbean Sea. Our project represents the best of this city with pools that transport you to the beach and interior tones inspired by cenotes, accompanied by lush vegetation. Corazón de Playa offers the true essence of living in Playa del Carmen.

CORAZÓN^{DE}PLAYA
URBAN RESIDENCES

CORAZÓN DE PLAYA

URBAN RESIDENCES

26 NTE street between 35 and 40 avenue, Gonzalo Guerrero. Playa del Carmen, Quintana Roo, Mexico.

Discover the perfect place in the heart of Playa del Carmen, with high value and demand, easy access to services, top-notch shops and restaurants, and close proximity to the renowned 5th Avenue and breathtaking Caribbean beaches.

NERBY PLACES

- 1) Elementary school
- 2) DAC - Mini market
- 3) Sport center (free access)
- 4) Quinta Alegría - Mall
- 5) La Mega - Supermarket
- 6) Walmart - Supermarket
- 7) Calle Corazón - Mall
- 8) Bus station
- 9) Public park

CORAZÓN DE PLAYA

URBAN RESIDENCES





Welcome to Corazon de Playa, a modern building in the heart of Playa del Carmen. Enjoy our state-of-the-art fitness center, rooftop terrace with a panoramic pool, yoga area, sauna, steam room and gym. Choose from studios, 1 and 2-bedroom apartments, including lock-off units. Ground-floor commercial spaces offer convenience. Experience vibrant Playa del Carmen living with beaches, nightlife, and culture nearby. Make Corazon de Playa your home and embrace the best of Playa del Carmen.



CORAZÓN
DE
PLAYA
URBAN RESIDENCES





PRIVILEGED LOCATION



IDEAL FOR VACATIONERS
AND DIGITAL NOMADS



PANORAMIC VIEW
FROM ROOFTOP

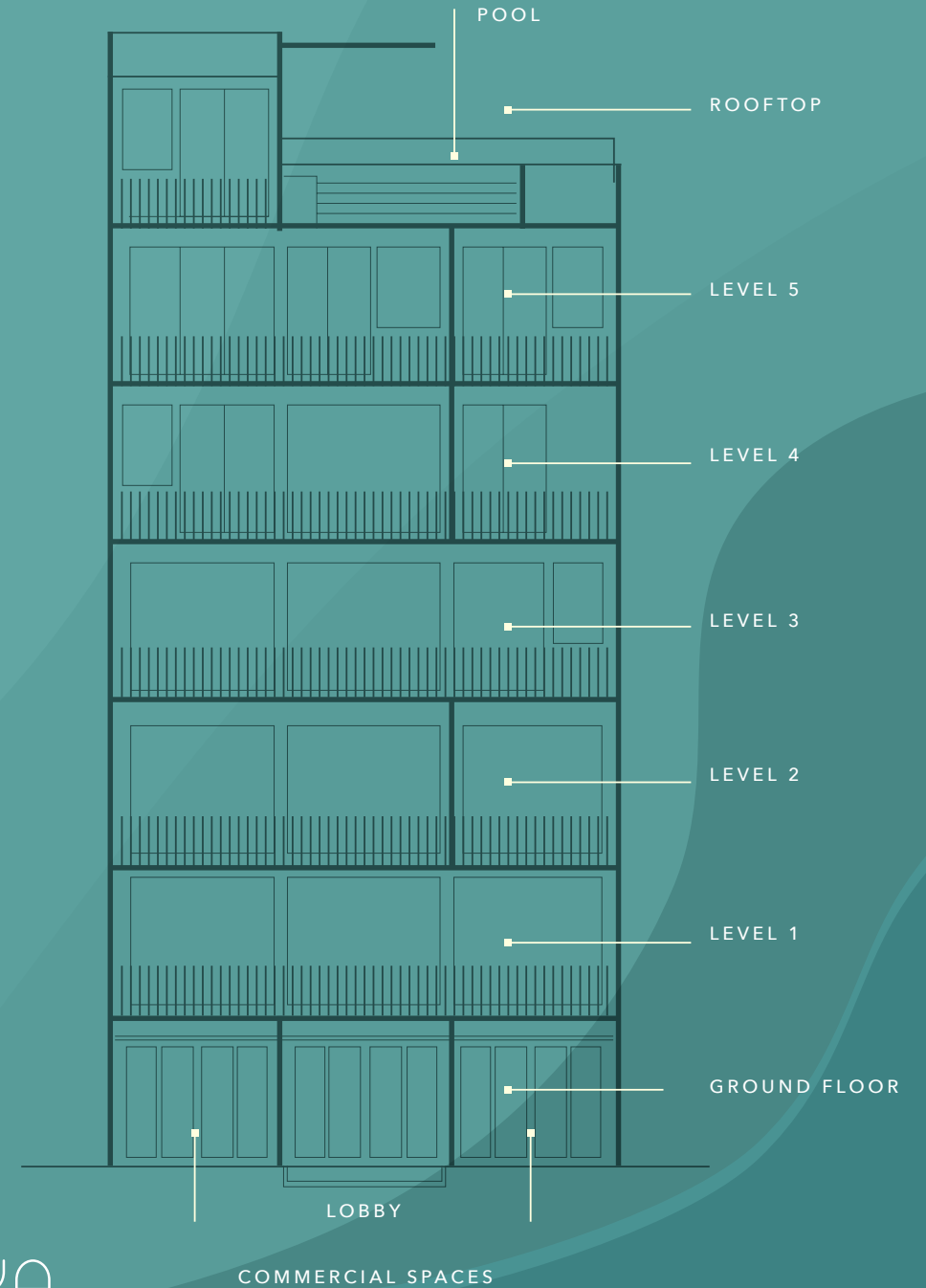


LOCATED IN A HIGH
CAPITAL GAIN ZONE

CORAZÓN^{DE}PLAYA
URBAN RESIDENCES

FEATURES

- ✦ 6 levels + rooftop
- ✦ 21 units
- ✦ 2 commercial spaces
- ✦ Elevator
- ✦ Lobby
- ✦ Laundry
- ✦ Security 24/7
- ✦ Bicycle port
- ✦ TESLA charging center



CORAZÓN DE PLAYA
URBAN RESIDENCES



CORAZÓN
DE
PLAYA

CORAZÓN DE PLAYA

AMENITIES



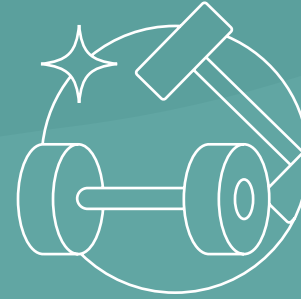
PANORAMIC
POOL



POOL BAR



SUNDECK



GYM



GRILL ZONE



CO-WORKING



YOGA



VAPOR



SAUNA

CORAZÓN^{DE}PLAYA

URBAN RESIDENCES

CORAZÓN DE PLAYA



PLAYA

RAZÓN DE



UNDER CONSTRUCTION

FEEL YOUR ENERGY

CONSTRUCTION

FEEL YOUR ENERGY

FEEL YOUR ENERGY



MAKE CORAZON DE PLAYA YOUR HOME AND

embrace the best

OF PLAYA DEL CARMEN

CORAZÓN^{DE}PLAYA

URBAN RESIDENCES

CHANGING THE
concept
OF INTERIOR COMFORT.

The spaces and furnitures in neutral colors complement its minimalist concept and the combination of textures, providing balance and warmth to its residents.







TEXTURES THAT REPRESENT

The Riviera Maya

NATURE

At Corazon de Playa, we incorporate regional natural materials like mahogany wood and marble stone to create an authentic atmosphere. With a minimalist design and a harmonious blend of textures, our spaces and furniture in neutral colors offer warmth and comfort to our residents.

INTERIORS WITH


materials

INSPIRED BY NATURE.

Rooms with neutral materials that express elegance and simplicity to create an intimate and harmonious space.




TEAK WOOD
OUTDOORS



INKED
MAHOGANY
PLYWOOD



CERAMIC FLOOR



APPARENT
CEMENT



GRANULATED
PASTE



TRAVERTINE
MARBLE
FLOORS







• OUR UNIT
inventory

STUDIOS

E01 - 355.95 sqft
E02 - 303.54 sqft
E03 - 277.48 sqft
E04 - 303.64 sqft
E05 - 272.53 sqft
E06 - 303.53 sqft
E07 - 318.28 sqft
E08 - 303.54 sqft
E09 - 322.59 sqft
E10 - 303.54 sqft

1 BEDROOM

D08 - 519.89 sqft
D09 - 597.49 sqft

2 BEDROOMS

D01 - 706.65 sqft
D03 - 597.50 sqft
D04 - 518.82 sqft
D05 - 597.39 sqft
D10 - 635.06 sqft
D11 - 597.39 sqft

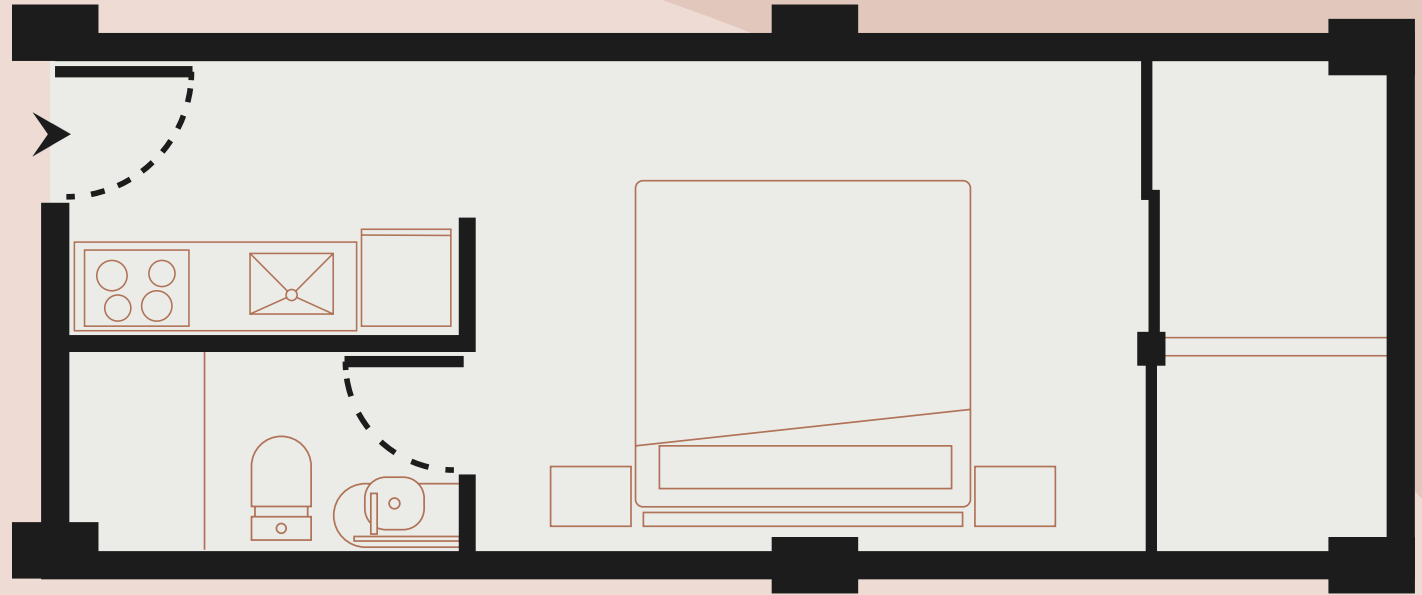
2 BR LOCK OFF

D02 - 744.97 sqft (LOCK OFF)
D06 - 811.06 sqft (LOCK OFF)
D07 - 901.04 sqft (LOCK OFF)

PROJECT TYPOLOGIES

STUDIO

FROM 272.53 sqft UNTIL 355.95 sqft

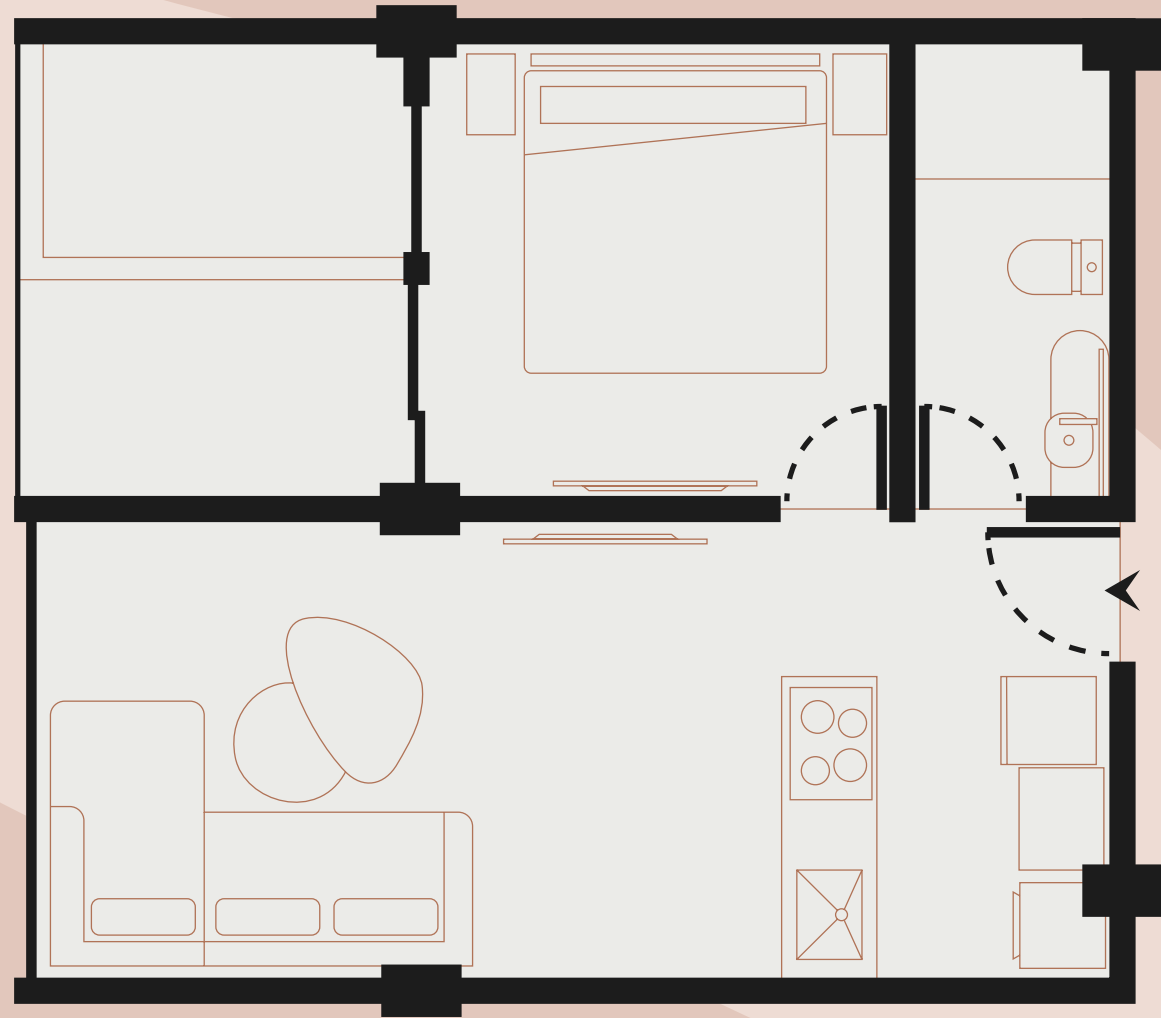


CORAZÓN DE PLAYA
URBAN RESIDENCES

PROJECT TYPOLOGIES

1 BEDROOM

FROM 519.89 sqft UNTIL 597.49 sqft

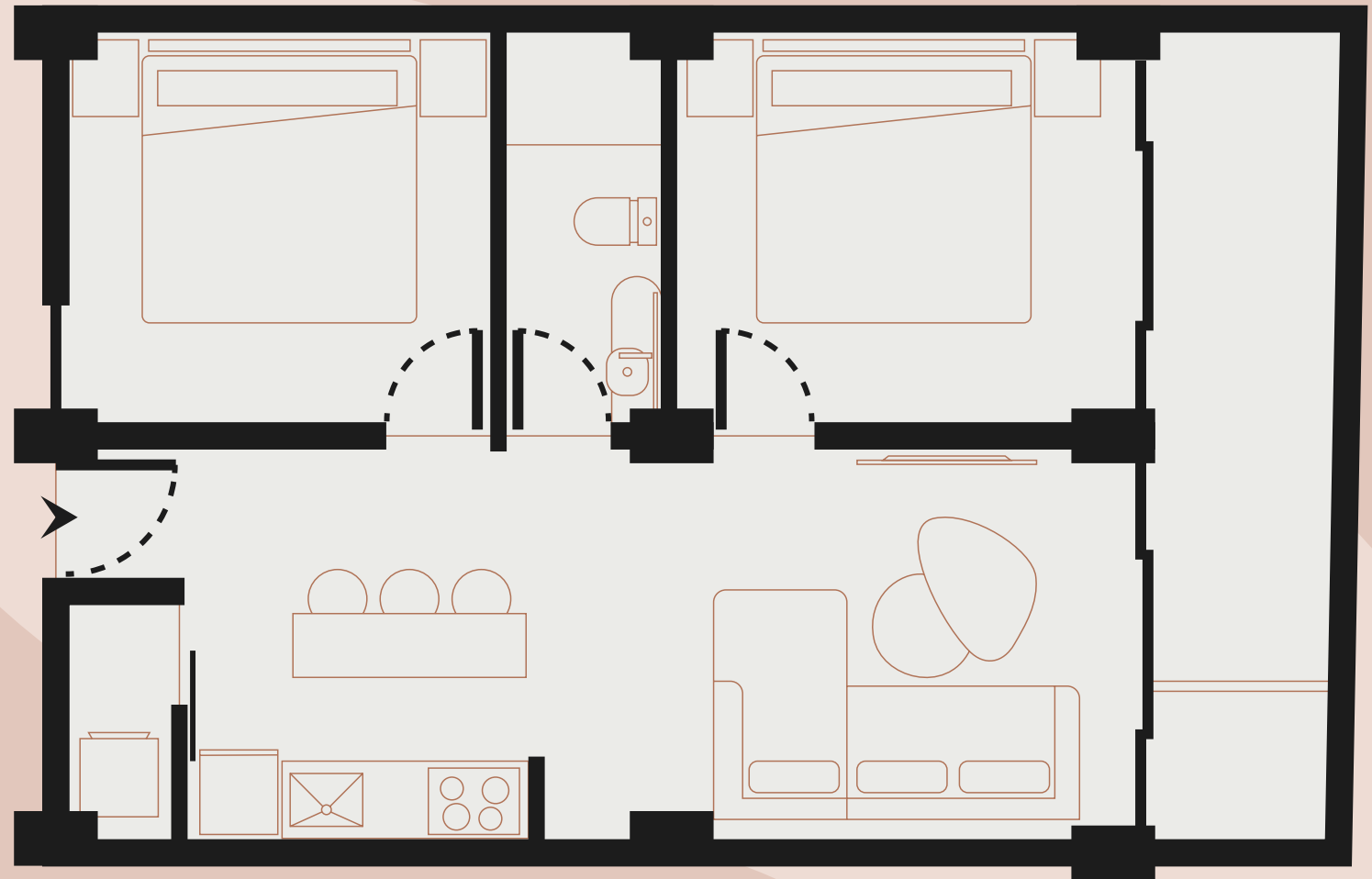


CORAZÓN DE PLAYA
URBAN RESIDENCES

PROJECT TYPOLOGIES

2 BEDROOMS

FROM 518.82 sqft UNTIL 706.65 sqft



CORAZÓN DE PLAYA

URBAN RESIDENCES

PLANS WITHOUT SPECIFIC SCALE.

PROJECT TYPOLOGIES

2 BEDROOMS LOCK-OFF

FROM 744.97 sqft UNTIL 901.04 sqft

CORAZÓN DE PLAYA
URBAN RESIDENCES

