

see  
TOWERS  
*cancún*

see  
TOWERS  
*cancun*



# see TOWERS

**See Towers** is a project comprised of two apartment towers and commercial space in **Cancun**.

A space designed to foster community in a natural and vibrant environment. Located in one of the **areas currently experiencing growth** in this Mexican paradise

---

**DISCOVER THE  
CHARM OF CANCUN**





CANCUN

# see TOWERS

LIVE CLOSE TO  
ANYWHERE



Puerto Cancun: 15 min

Hotel zone: 15 min

Delfines beach: 10 min

Airport: 7 min

Anahuac University: 4 min



# SPACES THAT FOSTER COMMUNITY



# MASTER PLAN



# AMENITIES

More than 30 amenities designed for residents of all ages



Family pool



Wading pool



Children's playroom



Children's playground



Parking



Trails



Palapa bar



Bike path



Running track



Adult pool



Instagram spots



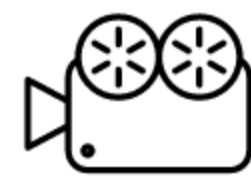
Garden lounge



Sun deck



Multipurpose room



Movie theatre







POOL



GYM



Grill area



Yoga area



Ice baths



Hammocks



Game room



Sunset terrace



Half basketball court



Gym



Padel court



Pet park



Crossfit



Coworking



Green areas"



Viewpoint



Recording studio

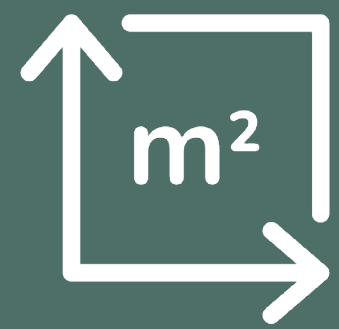
# AMENITIES



PADEL COURT



YOGA AREA



FROM 56 TO 160 M<sup>2</sup>



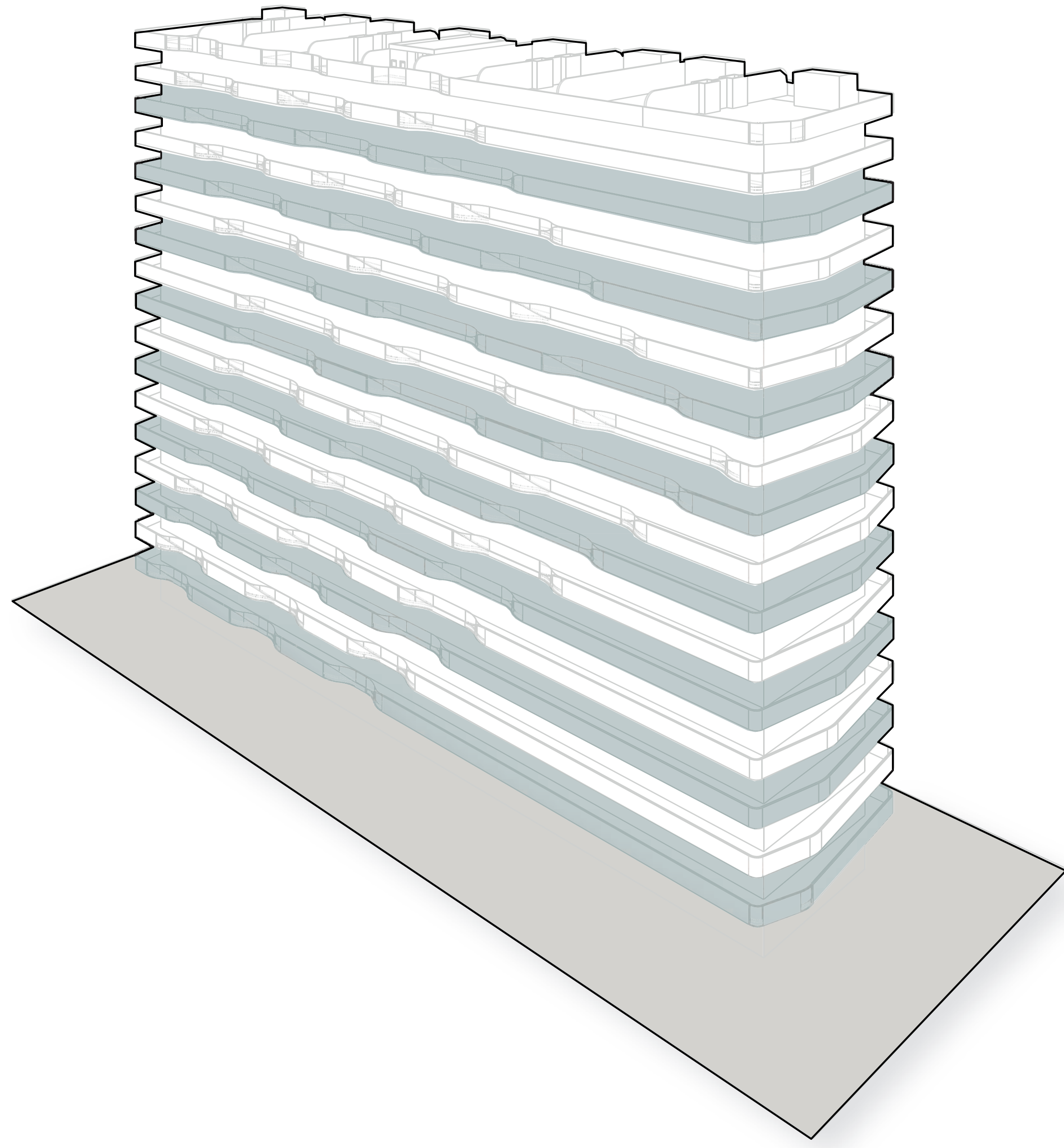
1 AND 2  
BEDROOMS



TERRACES  
OVERLOOKING  
THE LAGOON

**APARTMENTS**





# see TOWERS

The apartment types vary depending on the level.

On the odd-numbered levels, we offer one and two-bedroom apartments with differences in views and terraces.



ODD  
LEVELS

# APARTMENTS

## ONE BEDROOM

### ODD LEVELS

Interior: 41.87 m<sup>2</sup>

Terrace: 11.41 m<sup>2</sup> to 17.86 m<sup>2</sup>

Approximate total: 56.50 m<sup>2</sup>

- Living room
- Dining room
- Kitchen
- Service room
- Full bathroom
- Master bedroom
- Terrace



*\*The terraces were adjusted to the architectural shape, so their footage varies according to the level they are on*



# APARTMENTS

## TWO BEDROOMS

### ODD LEVELS

Interior: 95.73 m<sup>2</sup>

Terrace: 59.63 m<sup>2</sup> to 67.88 m<sup>2</sup>

Approximate Total: 159.48 m<sup>2</sup>

- Living room
- Dining room
- Kitchen
- Service room
- Half bathroom
- Master bedroom
- Bedroom 01
- Terrace



*\*The terraces were adjusted to the architectural shape, so their footage varies according to the level they are on*



LIVING ROOM

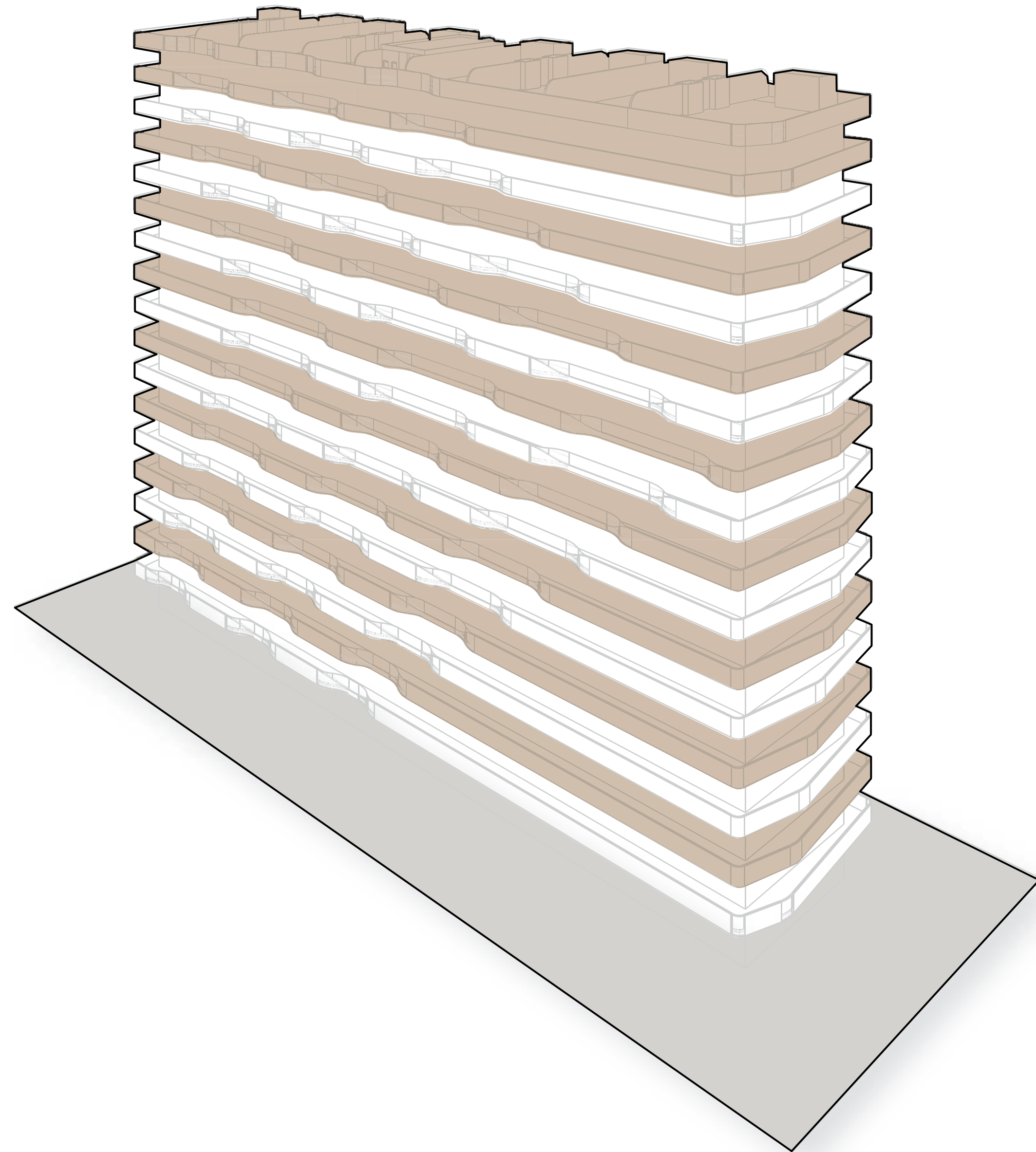


DINING ROOM



# MASTER BEDROOM





# see TOWERS

On even-numbered levels, we offer two-bedroom apartments with differences in views and terraces.



EVEN  
LEVELS

# APARTMENTS P1

TWO BEDROOMS

EVEN LEVELS

Interior: 95.44 m<sup>2</sup>

Terrace: 12.25 m<sup>2</sup> to 18.72 m<sup>2</sup>

Approximate Total: 110.92 m

- Living room
- Dining room
- Kitchen
- Service room
- Half bathroom
- Master bedroom
- Bedroom 01
- Terrace



*\*The terraces were adjusted to the architectural shape, so their footage varies according to the level they are on.*

# APARTMENTS P2

TWO BEDROOMS

EVEN LEVELS

Interior: 96.37 m<sup>2</sup>

Terrace: 40.04 m<sup>2</sup> to 45.80 m<sup>2</sup>

Approximate Total: 139.29 m<sup>2</sup>

- Living room
- Dining room
- Kitchen
- Service room
- Half bathroom
- Master bedroom
- Bedroom 01
- Terrace



*\*The terraces were adjusted to the architectural shape, so their footage varies according to the level they are on.*





SECONDARY BEDROOM



ROOF TOP

see  
TOWERS  
*cancun*





[CLICK HERE](#)  
[TO VIEW THE](#)  
[VIRTUAL TOUR](#)

see  
TOWERS  
*cancún*