



CONDOS

BY THE BEACH

BEACHFRONT

APARTMENTS



Mahahual

Emerging destination in the Mexican Caribbean, surrounded by turquoise waters, stunning beaches, and a variety of attractions that make it the new jewel of the Caribbean.

-  Airport
-  Mayan Train Station



CARIBBEN SEA



The perception of paradise changes when you can greet each sunrise with the sea breeze and turquoise hues as part of your everyday life in a dream that can become a reality, and it's here.

DISTANCE

- Upcoming Maya Train station with direct transportation from Limones.
- 2 hours from Tulum International Airport.
- 1 hour and 15 minutes from Bacalar.
- 1 hour and 30 minutes from Chetumal.

STRENGTHS

- Second largest reef in the world (Banco Chinchorro).
- Grand Costa Maya cruise port.
- Emerging destination with higher demand than supply.
- Mayan ruins of Dzibanche, Kinichna, and Kohunlich.





A boutique project of 16 oceanfront apartments in the most exclusive pedestrian area of Mahahual.

A fusion of quality
and nature that
provides an
unparalleled sense of
peace for visionary
investors.





All apartments are delivered fully furnished and equipped with a contemporary design, high-end finishes, and cozy spaces, perfect for living or vacationing in paradise.



1 BEDROOM
APARTMENT



LIVING AND
DINING AREA



STUDIO



WELLNESS AREA
/ YOGA



ROOFTOP WITH
LOUNGE AREA

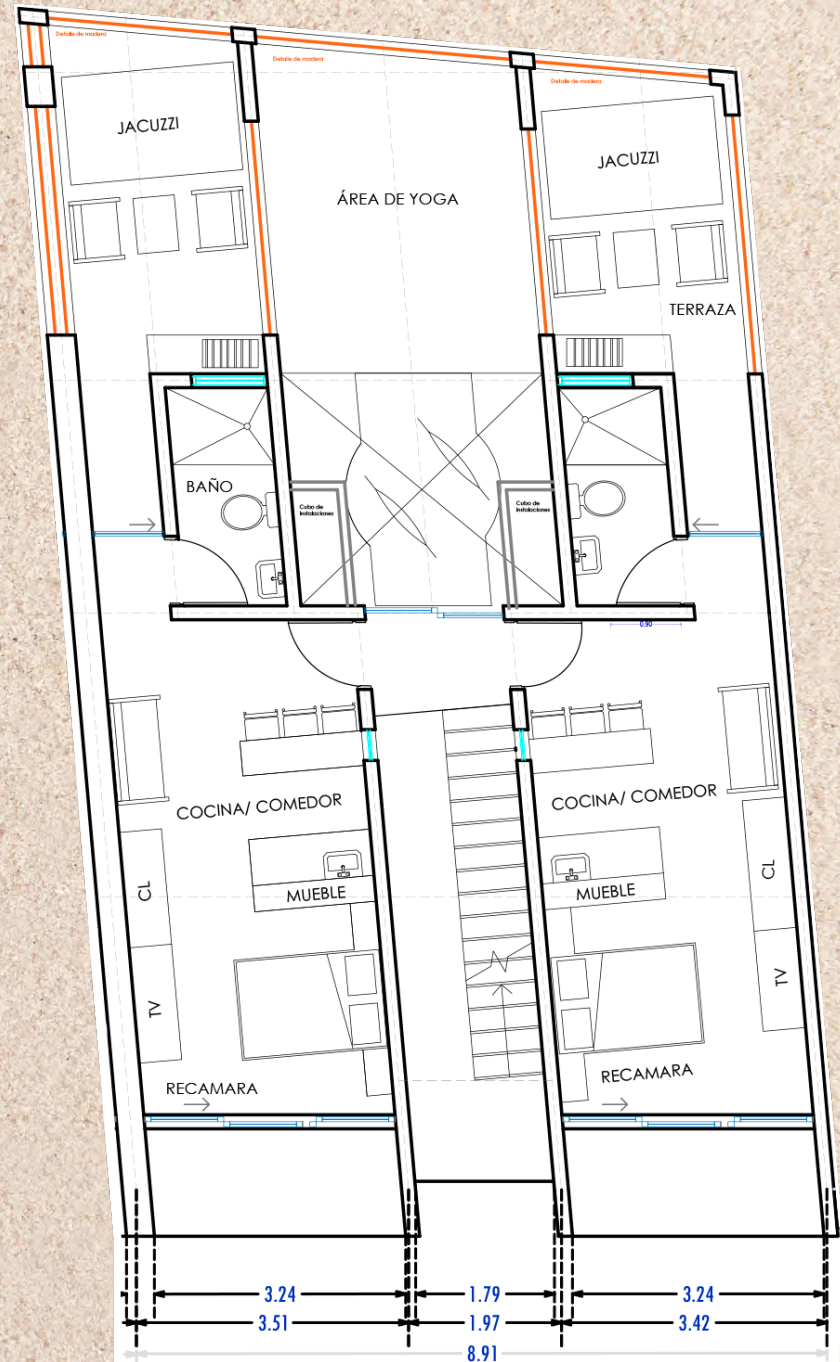


INFINITY POOL

TYOLOGIES

1 Bedroom Type A

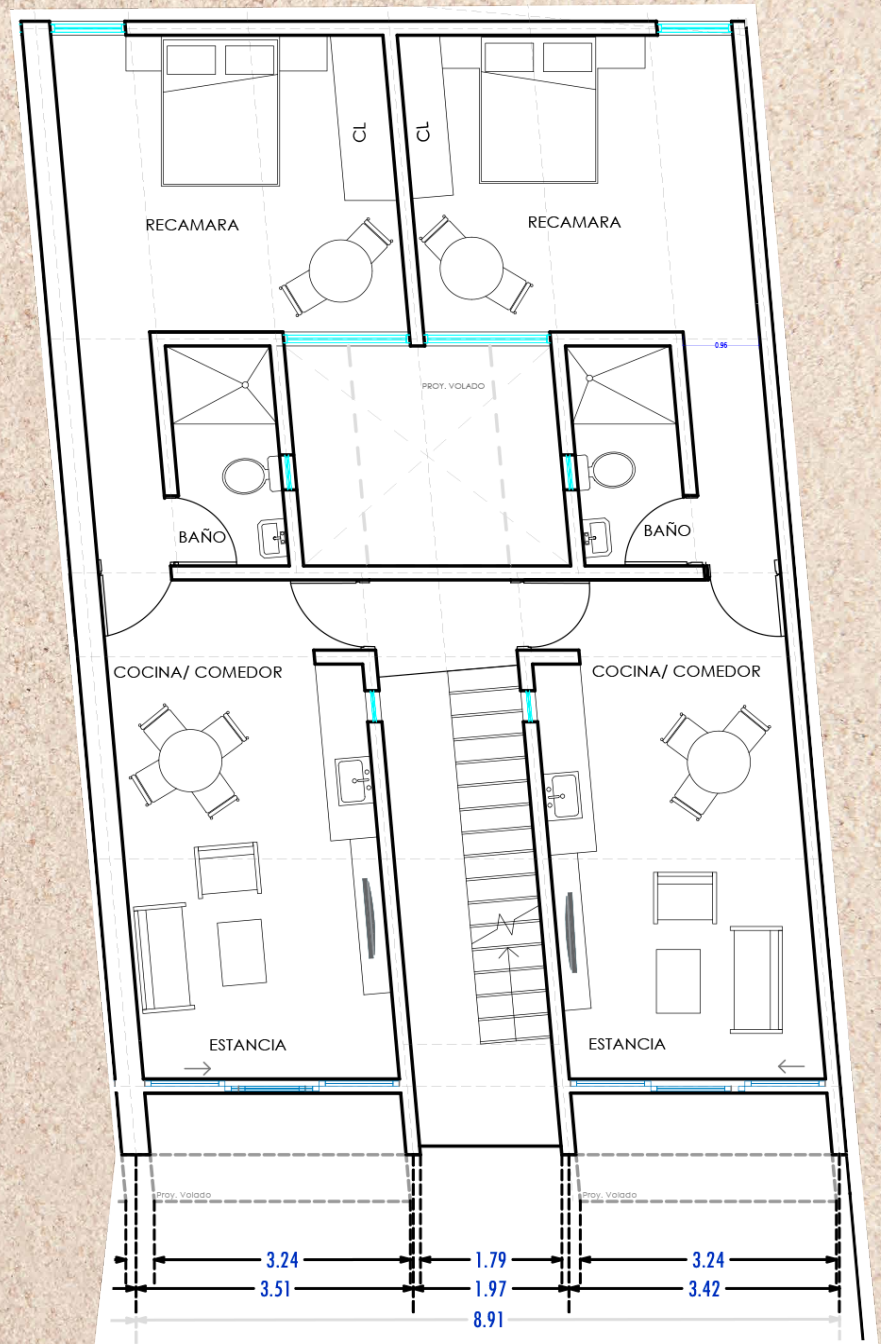
- Ground floor
- 50 m²
- 1 bedroom
- 1 bathroom
- Closet
- Kitchen/dining area
- Terrace area with jacuzzi and grill
- Front balcony with direct access to the boardwalk/sea



TYOLOGIES

1 Bedroom Type B

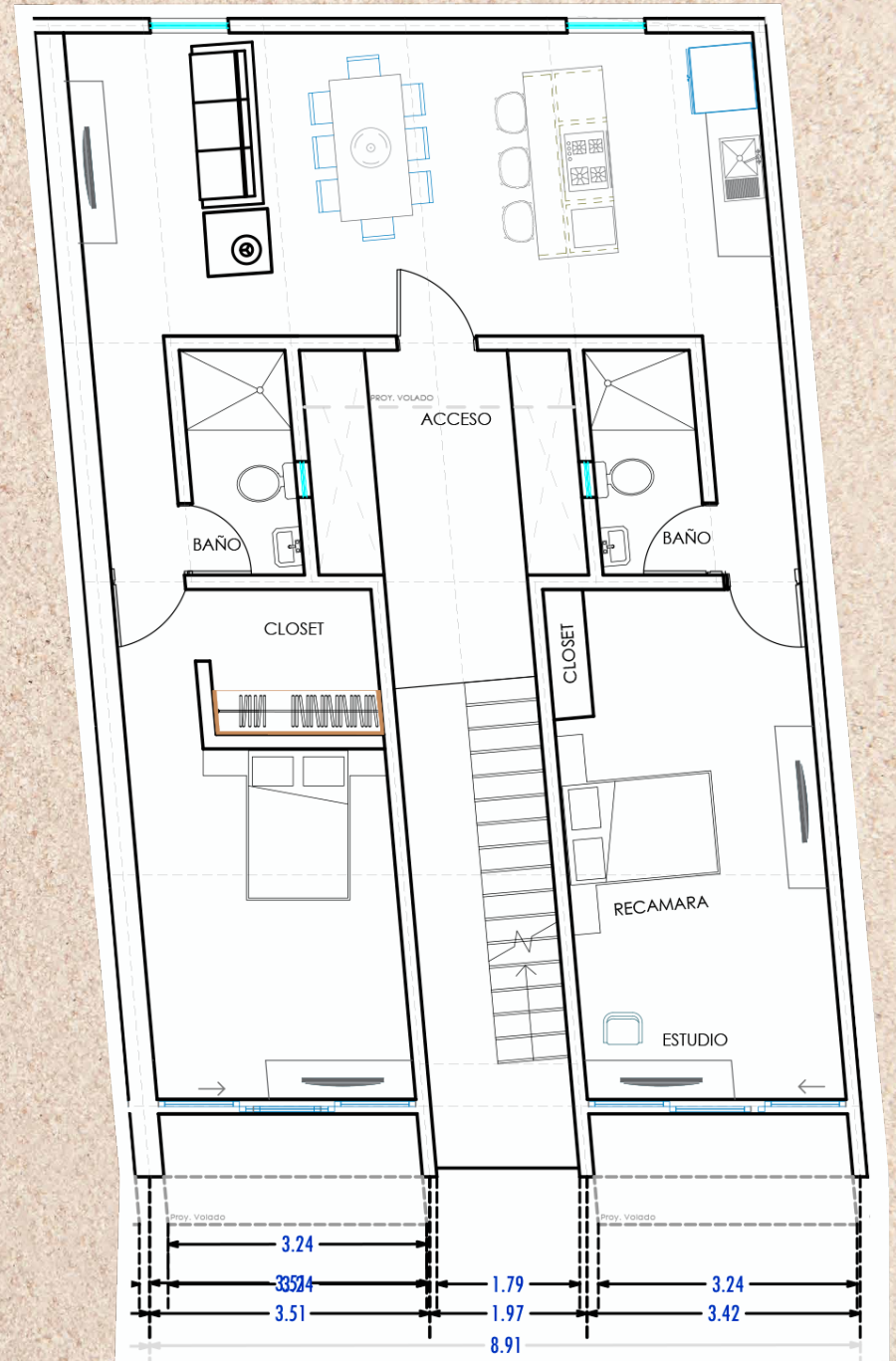
- Levels 2, 3, and 4
- 51 m²
- 1 bedroom with study
- 1 bathroom
- Closet
- Kitchen/dining area
- Living area
- Front balcony with sea/boardwalk view



TYOLOGIES

2 Bedrooms

- Level 2
- 102 m²
- 1 Bedroom with study and closet
- 1 Lock-off bedroom with closet
- 2 Bathrooms
- Kitchen/dining area with large windows and natural views.
- Front balcony in both bedrooms with sea/boardwalk view.

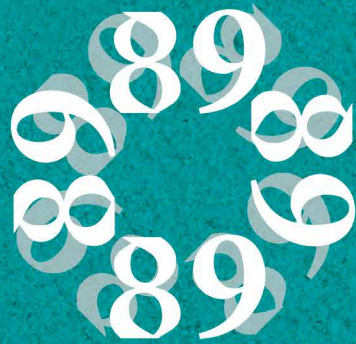




GROUND FLOOR
WITH OCEAN VIEW

- Direct access to the exclusive pedestrian boardwalk
- Front access to the private beach club of Condos 89
- Ocean view from all units in the project
- Agreement with 5 beach clubs offering up to 20% discount on consumption





CONDOS

BY THE BEACH