



**E**  
ELEMENTS  
A P A R T M E N T S







# ARBOLADA

Developed by Grupo Cumbres, the Arbolada residential community is located on Av. Huayacan, in the heart of Cancún—the perfect place for young families. The concept of Arbolada is based on community, safety, the ecological landscape of its green areas, privacy, and an urban design that creates spaces for the coexistence of all neighbors: adults, children, and pets.



# WHY ARBOLADA?



## Security



- 100% of the perimeter is fenced.
- Access and control gate.
- Double security booth with cameras.
- Motorized security patrols available 24/7 throughout the community.

## Comfort



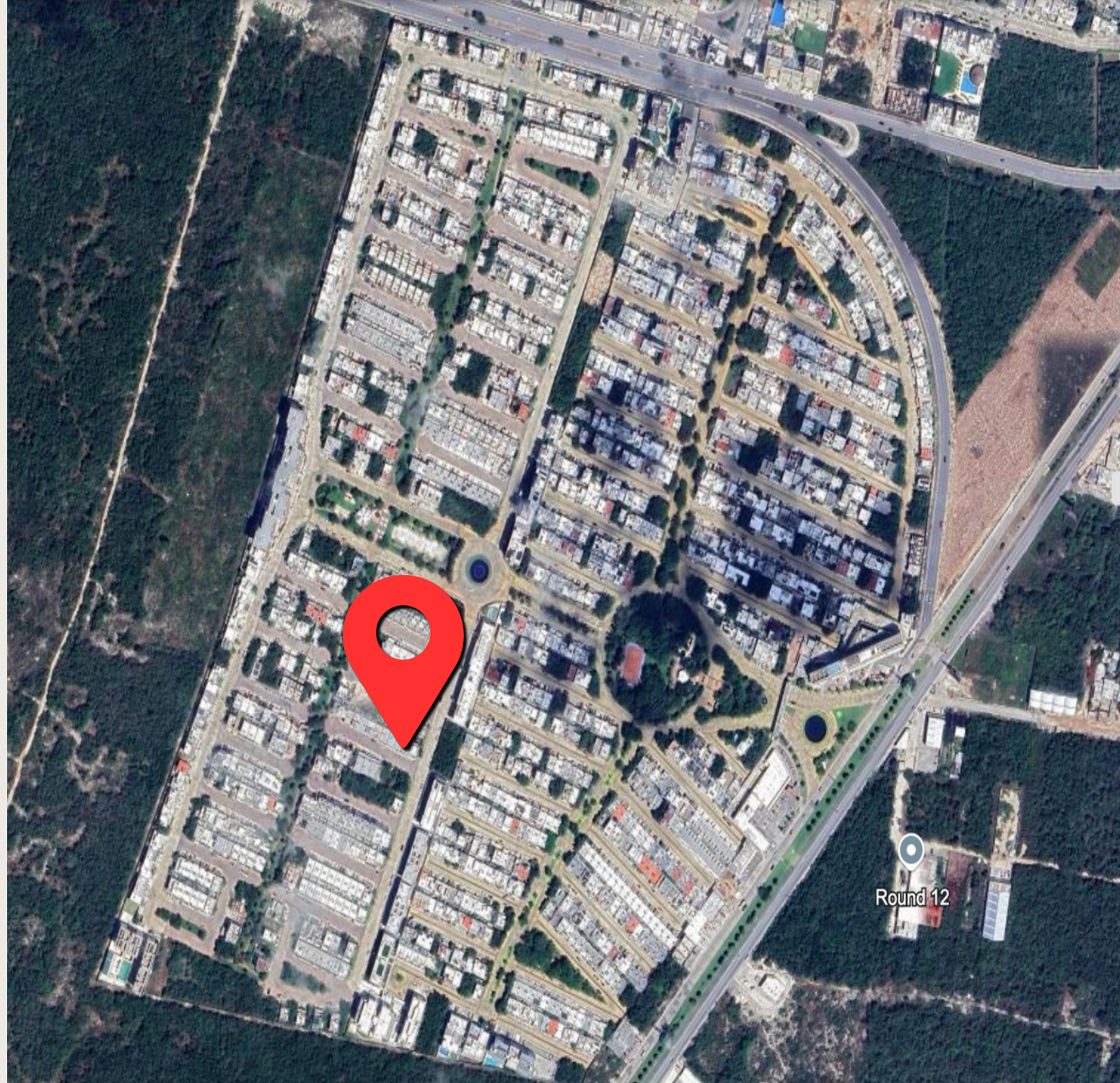
- Urban gym, bike lane, skate park and multi-purpose court.
- Entrance via Av. Huayacan and Av. 135.
- Located within the area of the greatest commercial and residential development in Cancun.

## Quality



- Over 7,500 m2 of green areas and recreational parks.
- Underground installations.
- Green areas with an automated irrigation system.
- Efficient stormwater drainage.





## PRIVILEGED LOCATION

- Convenience stores on both sides of the main gate of Arbolada.
- Hotel Hive at the residential entrance.
- Beauty salon, restaurants, and gym within less than 3 minutes.
- 2 supermarkets within less than 5 minutes.
- Shopping centers, medical services, and offices within 5–10 minutes.
- Cancún International Airport and Hotel Zone just 15 minutes away.





**E**  
ELEMENTS  
APARTMENTS



## A modern and harmonious refuge in the heart of Cancún.

Inspired by the essence of the four elements—earth, water, air, and fire—Elements combines the strength of the earth, the vitality of water, the freshness of air, and the energy of fire, capturing the essence of nature and the tropical environment that defines this vibrant city.

Designed especially for those seeking a home that reflects balance and serenity, every space in Elements is carefully integrated into a sophisticated and exclusive setting, tailored to meet the needs of modern living.



# ABOUT

Elements Apartments will feature four floors, a total of 23 apartments, and 4 roof gardens, all designed to maximize your comfort and lifestyle.

The units have been crafted with high-quality finishes, chosen specifically for Cancun's unique characteristics, and with optimized spaces to offer both spaciousness and functionality.



## Units

- 22 one and two bedroom apartments.
- 1 three bedroom apartment.
- 4 roof gardens.



## Dimensions

- From 67.57 m2 to 112.26 m2.





# LOCATION

## INSIDE ARBOLADA





# AMENITIES



## LANDSCAPING

Green spaces that reflect the vitality of earth and water, designed to reconnect with nature and provide a tranquil refuge.

## INFINITY POOL

Enjoy moments of relaxation in the infinity pool, surrounded by lounging areas. Water symbolizes freshness and energy, adding vitality to the environment.

## SOCIAL AREAS

Inspired by the warmth and energy of fire, this space has been designed for gathering and celebration.

## SECURITY

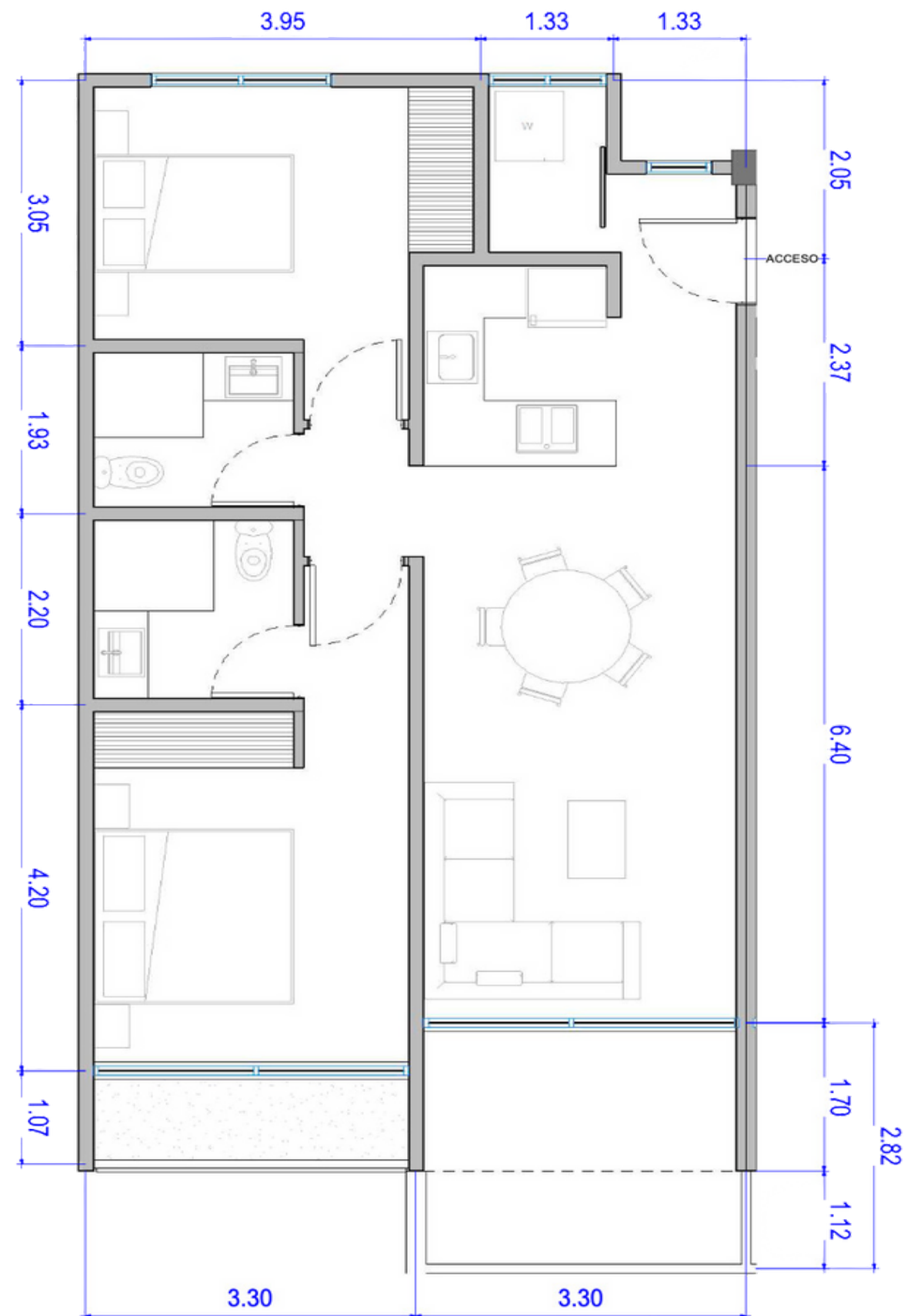
An integrated security and access control system, providing the peace of mind and stability you need to enjoy your home to the fullest.



# APARTMENT MODELS







## APT PB 1

81.34 M2 LIVING AREA  
3.39 M2 UNCOVERED TERRACE

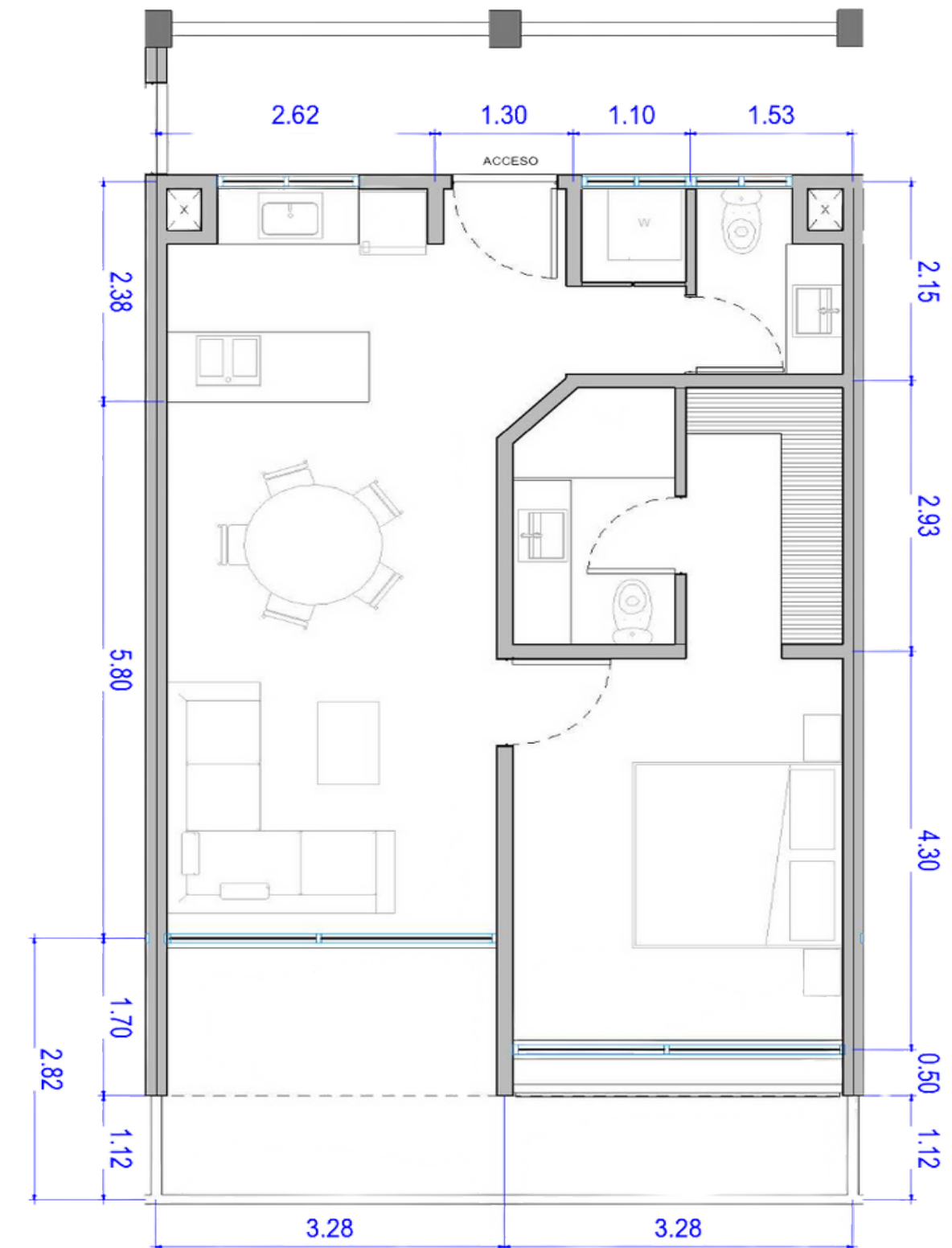
- 2 BEDROOMS
- 2 FULL BATHROOMS
- LIVING ROOM/DINING ROOM
- KITCHEN
- LAUNDRY ROOM
- 2 TERRACES
- 2 PARKING SPACES



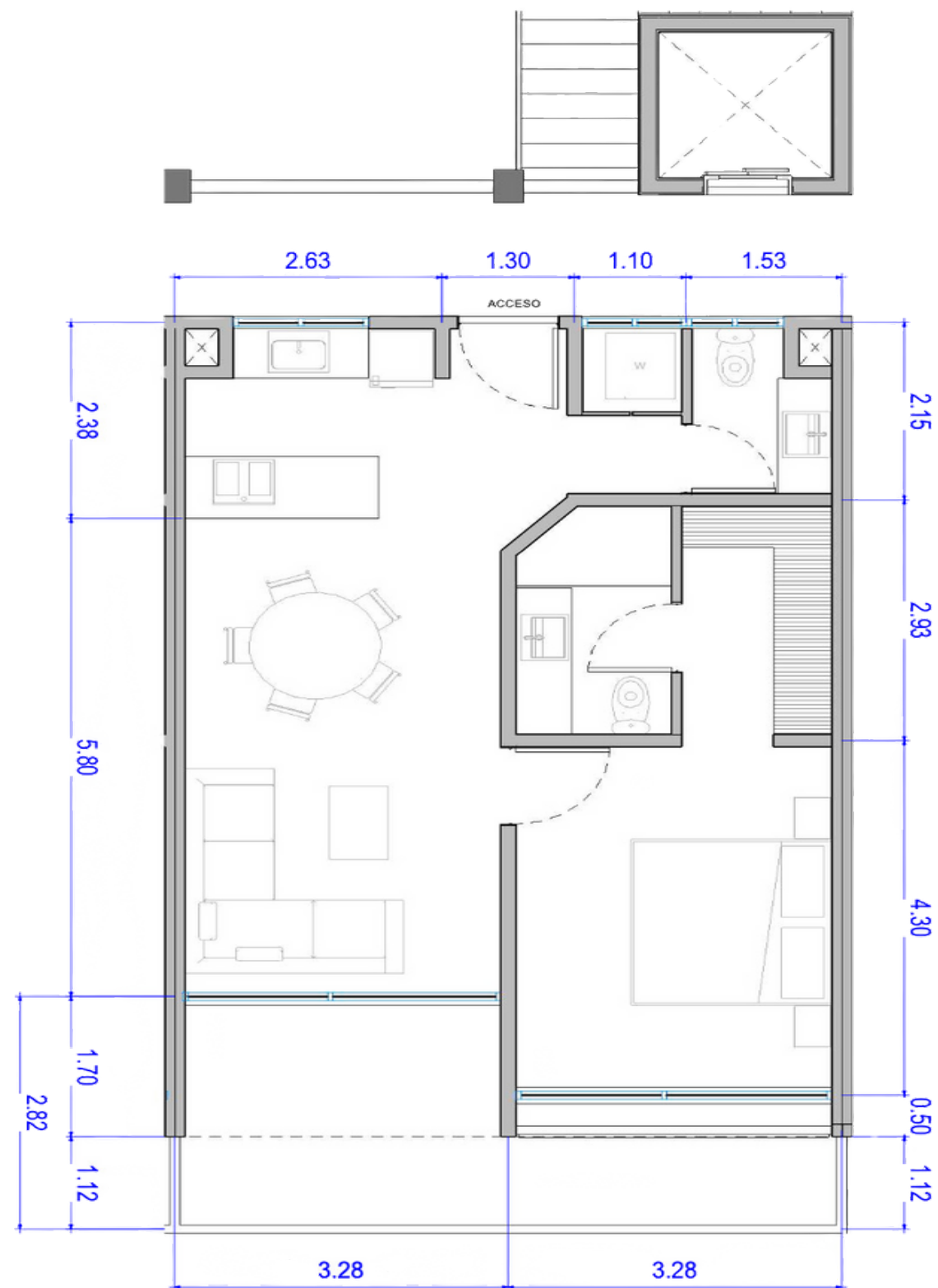
## APT PB 2

64.08 M2 LIVING AREA  
3.39 M2 UNCOVERED TERRACE

- 1 BEDROOM
- 1 FULL BATHROOM
- LIVING ROOM/DINING ROOM
- KITCHEN
- LAUNDRY ROOM
- 1 TERRACE
- 1 PARKING SPACE







## APT PB 3

64.08 M2 LIVING AREA  
6.90 M2 UNCOVERED TERRACE

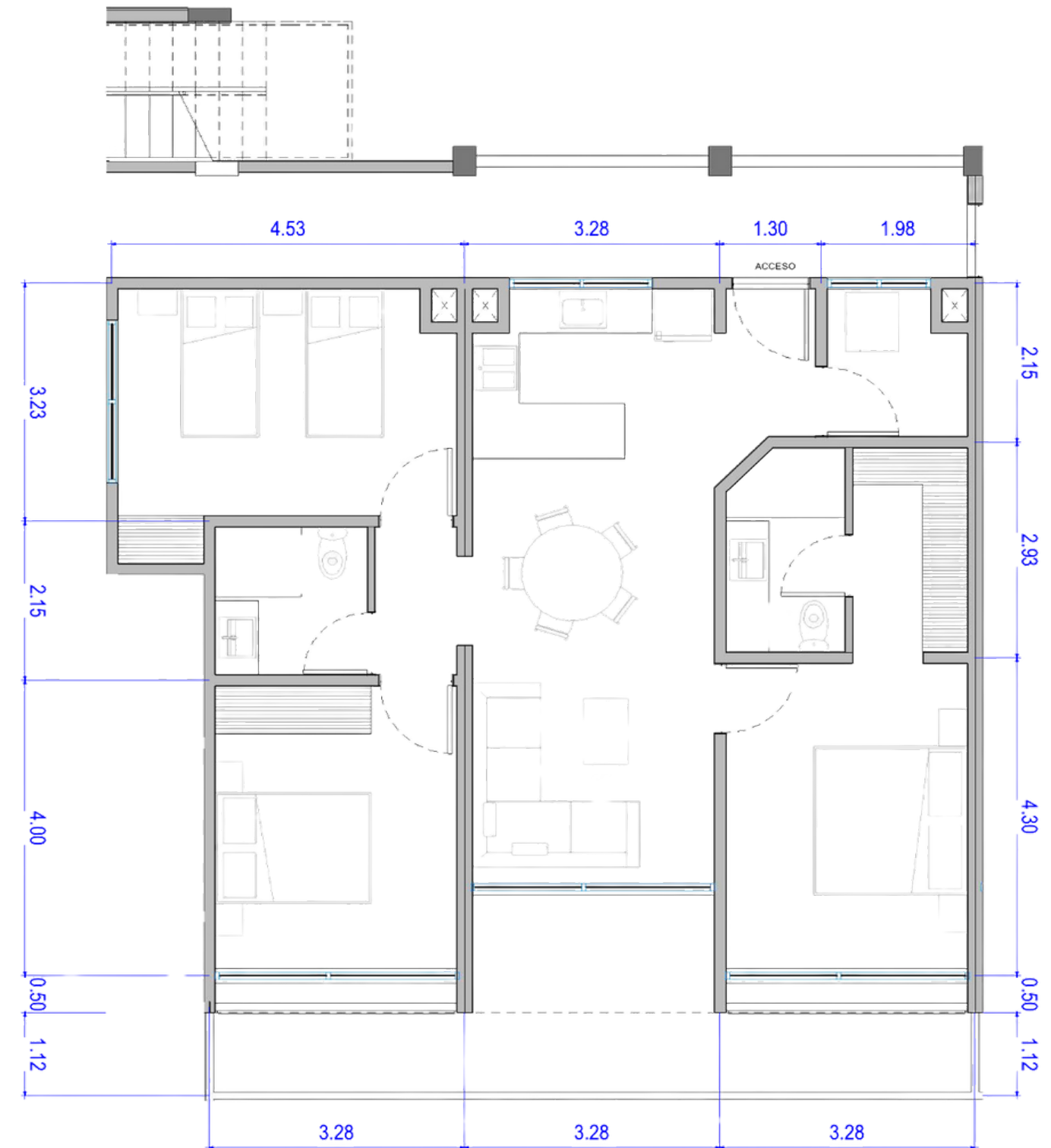
- 1 BEDROOM
- 1 FULL BATHROOM
- 1 GUEST BATHROOM
- LIVING ROOM/DINING ROOM
- KITCHEN
- LAUNDRY ROOM
- 1 TERRACE
- 1 PARKING SPACE



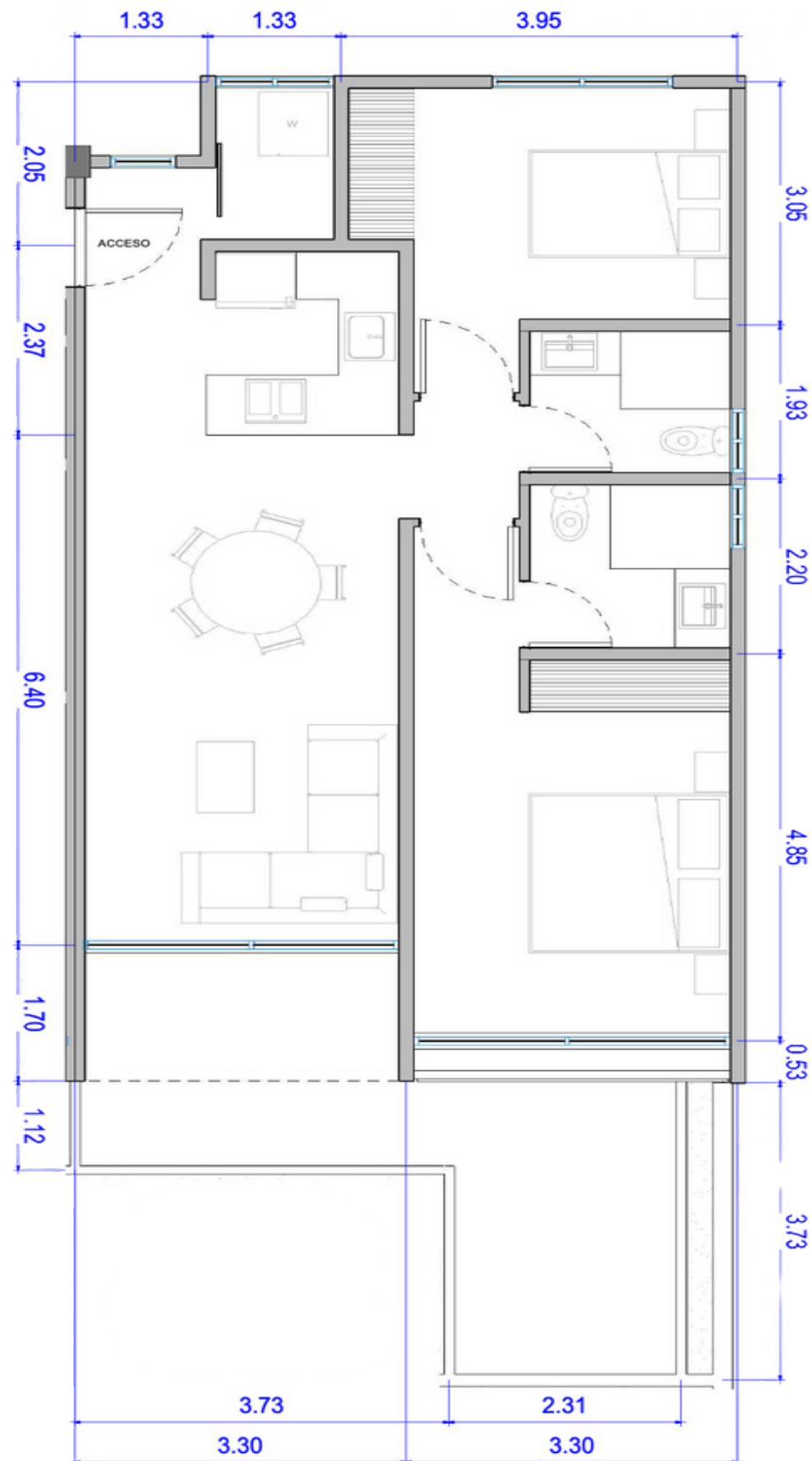
## APT PB 4

101.86 M2 LIVING AREA  
10.40 M2 UNCOVERED TERRACE

- 3 BEDROOMS
- 3 FULL BATHROOMS
- LIVING ROOM/DINING ROOM
- KITCHEN
- LAUNDRY ROOM
- 2 PARKING SPACES







## APT PB 5

81.34 M2 LIVING AREA  
13.86 M2 UNCOVERED TERRACE

- 2 BEDROOMS
- 2 FULL BATHROOMS
- LIVING ROOM/DINING ROOM
- KITCHEN
- LAUNDRY ROOM
- 2 PARKING SPACES

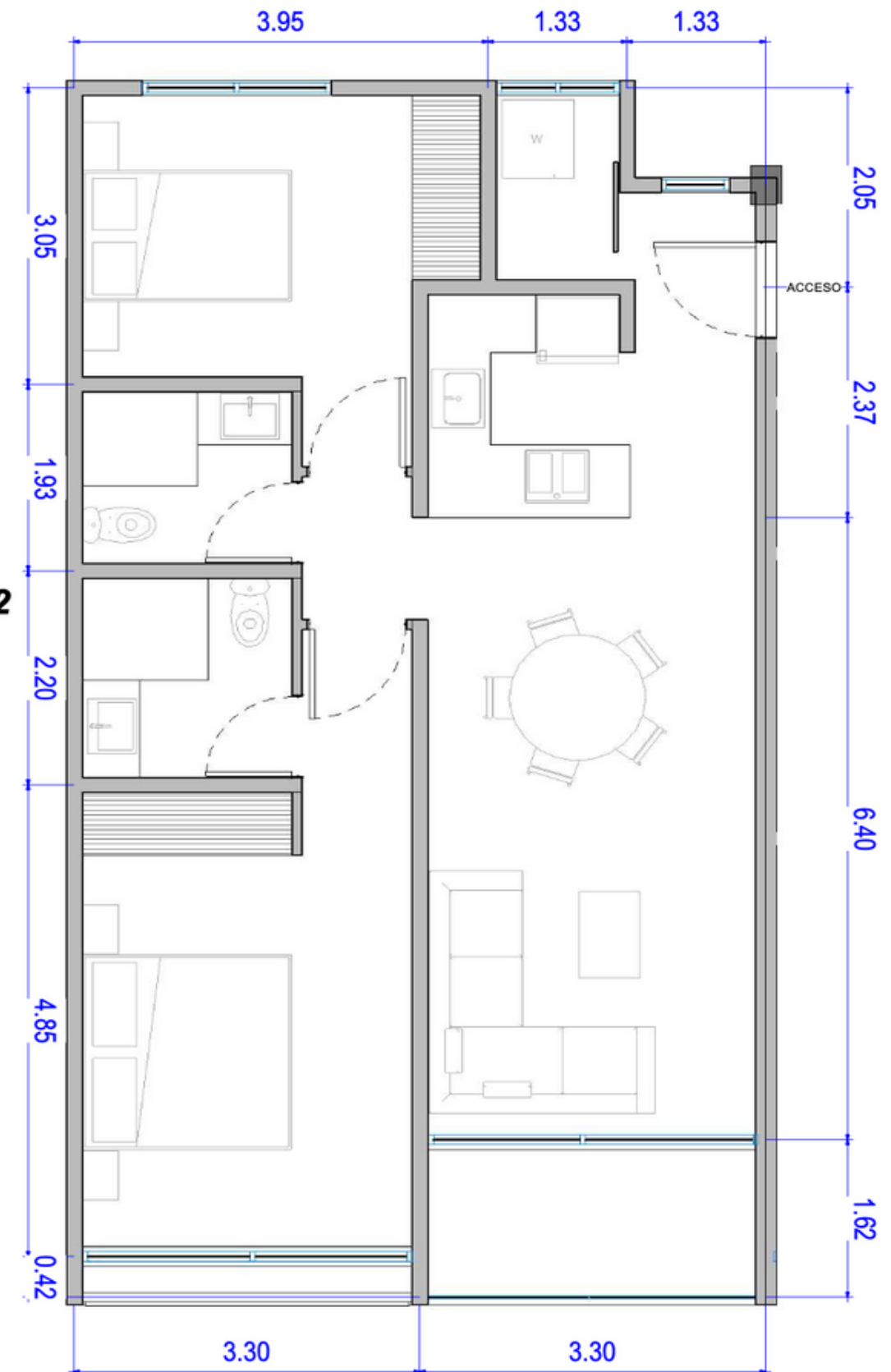


# APT TYPE 1

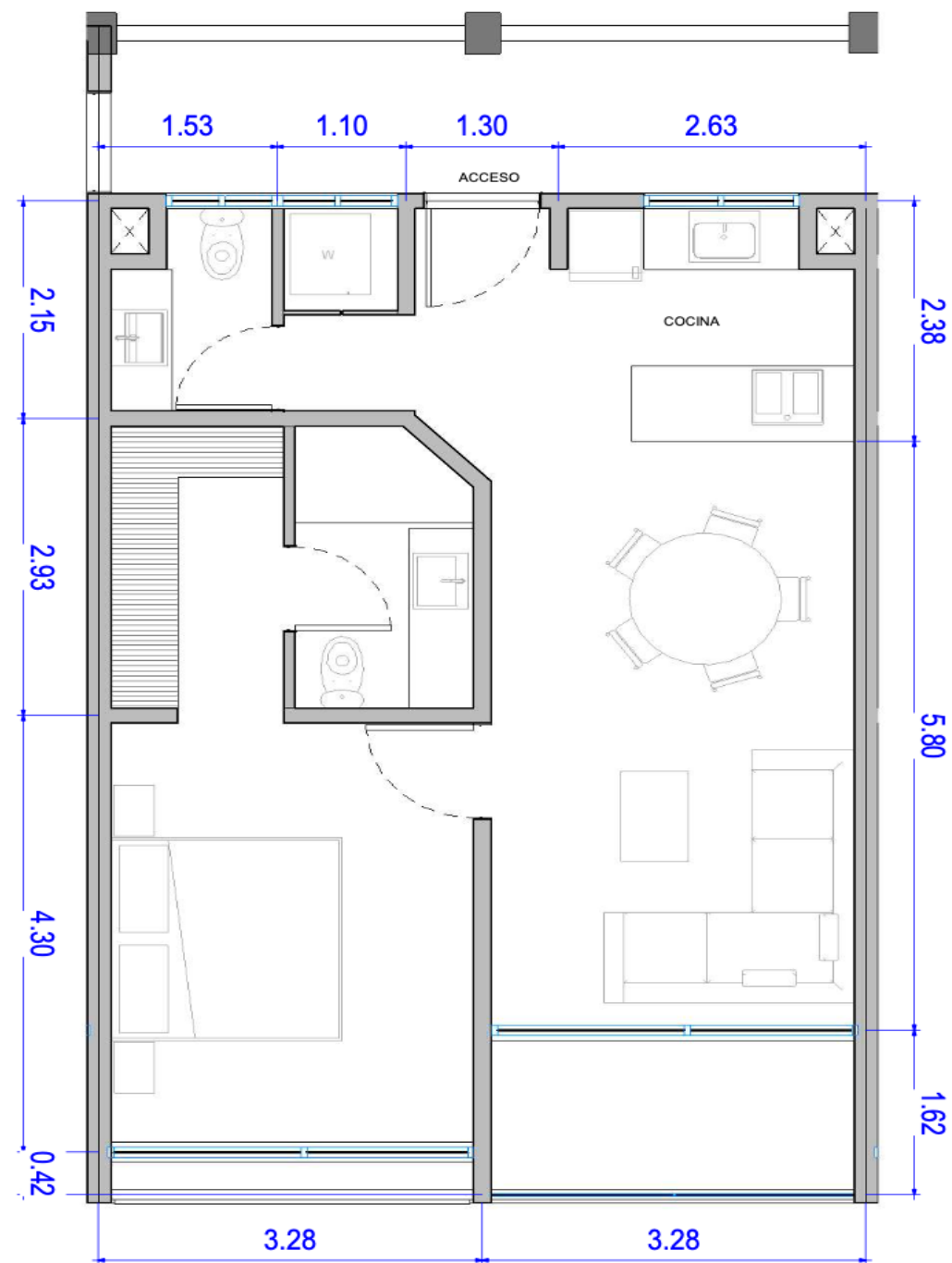
81.34 M2 LIVING AREA

- 2 BEDROOMS
- 2 FULL BATHROOMS
- LIVING ROOM/DINING ROOM
- KITCHEN
- LAUNDRY ROOM
- 2 PARKING SPACES

**D: 101**  
**81.34 m2**







**D: 102**  
**64.08 M2**

## APT TYPE 2

64.08 M2 LIVING AREA

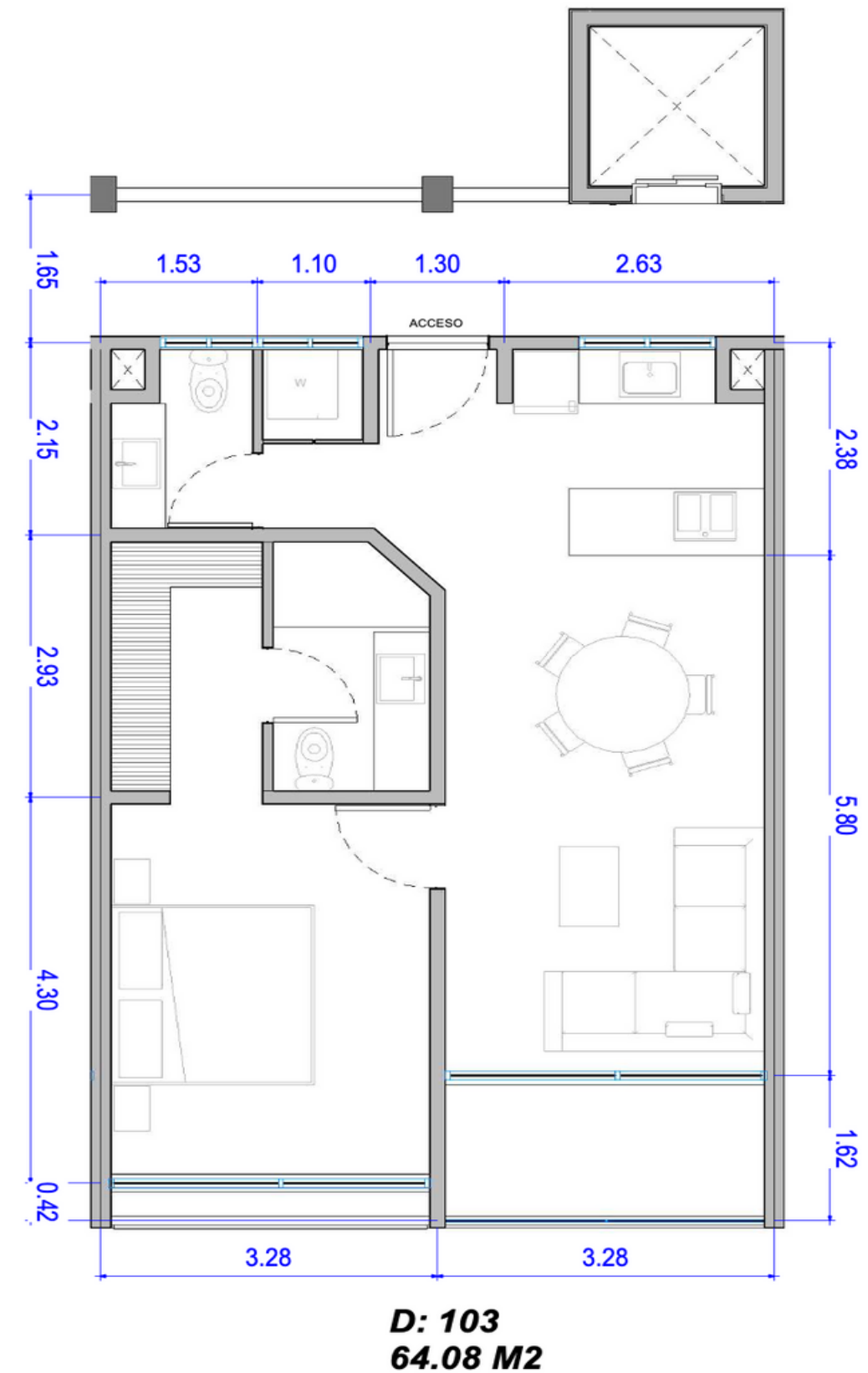
- 1 BEDROOM
- 1 FULL BATHROOM
- 1 GUEST BATHROOM
- LIVING ROOM/DINING ROOM
- KITCHEN
- LAUNDRY ROOM
- 1 PARKING SPACE



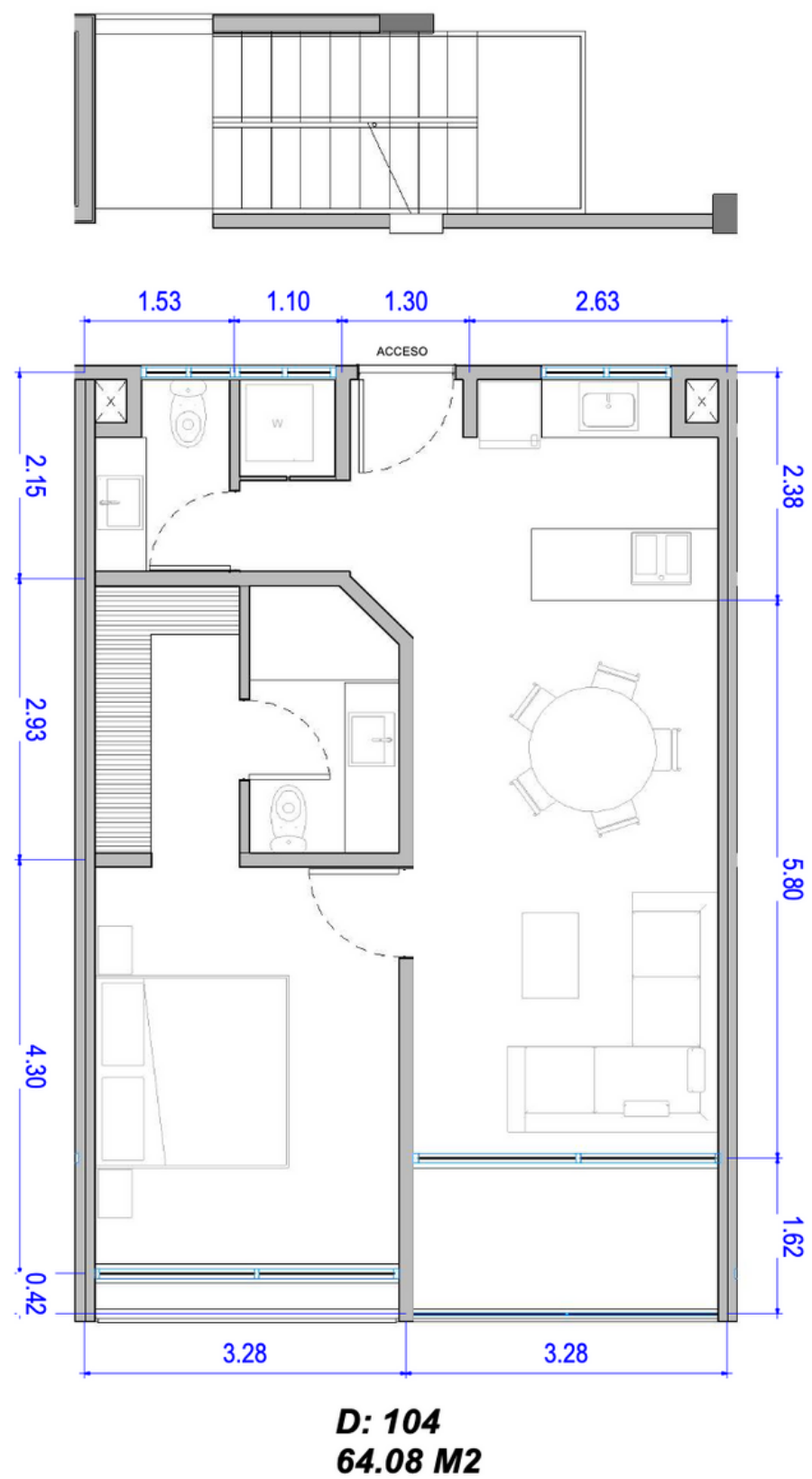
## APT TYPE 3

64.08 M2 LIVING AREA

- 1 BEDROOM
- 1 FULL BATHROOM
- 1 GUEST BATHROOM
- LIVING ROOM/DINING ROOM
- KITCHEN
- LAUNDRY ROOM
- 1 PARKING SPACE







## APT TYPE 4

64.08 M2 LIVING AREA

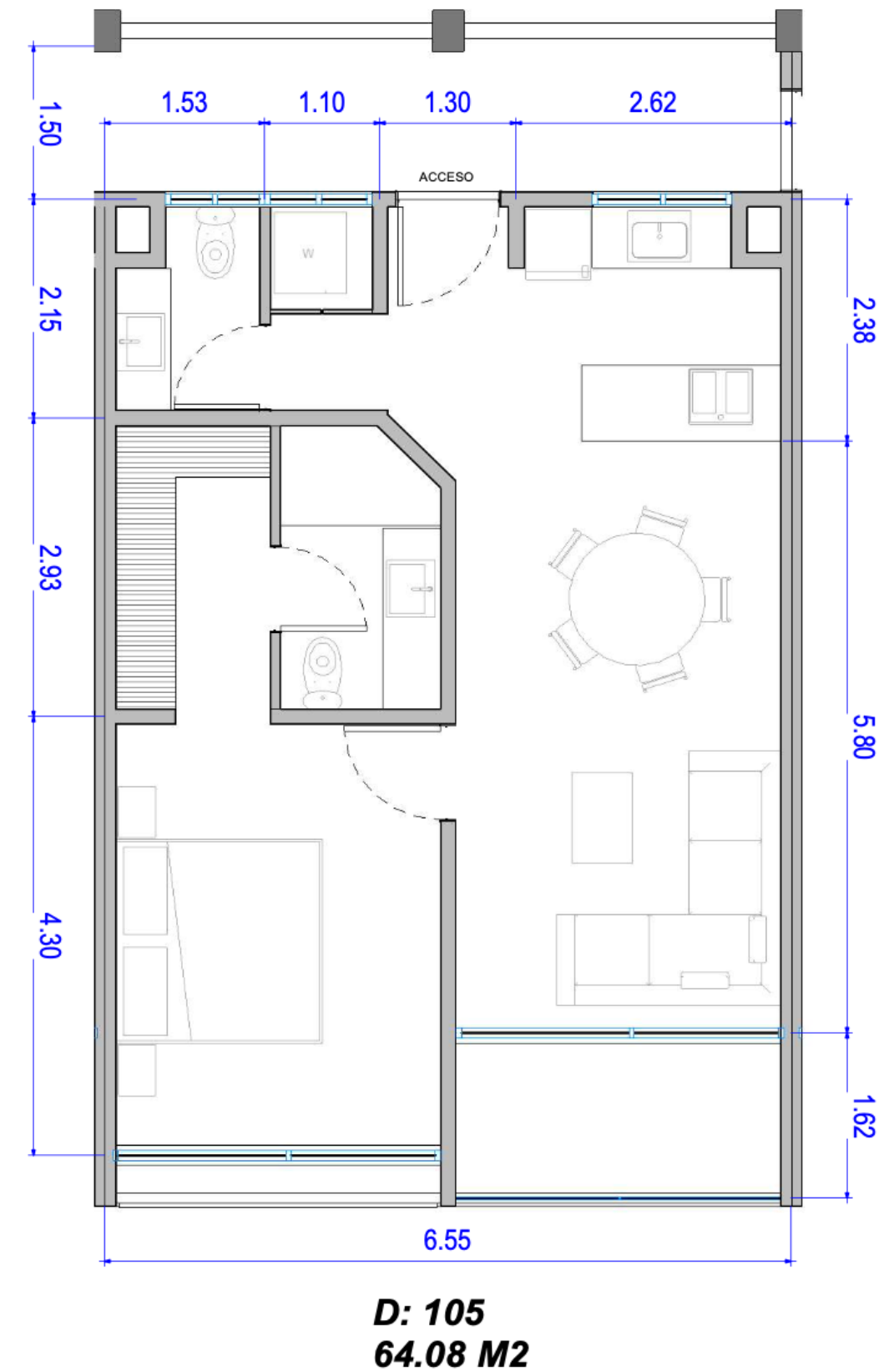
- 1 BEDROOM
- 1 FULL BATHROOM
- 1 GUEST BATHROOM
- LIVING ROOM/DINING ROOM
- KITCHEN
- LAUNDRY ROOM
- 1 PARKING SPACE



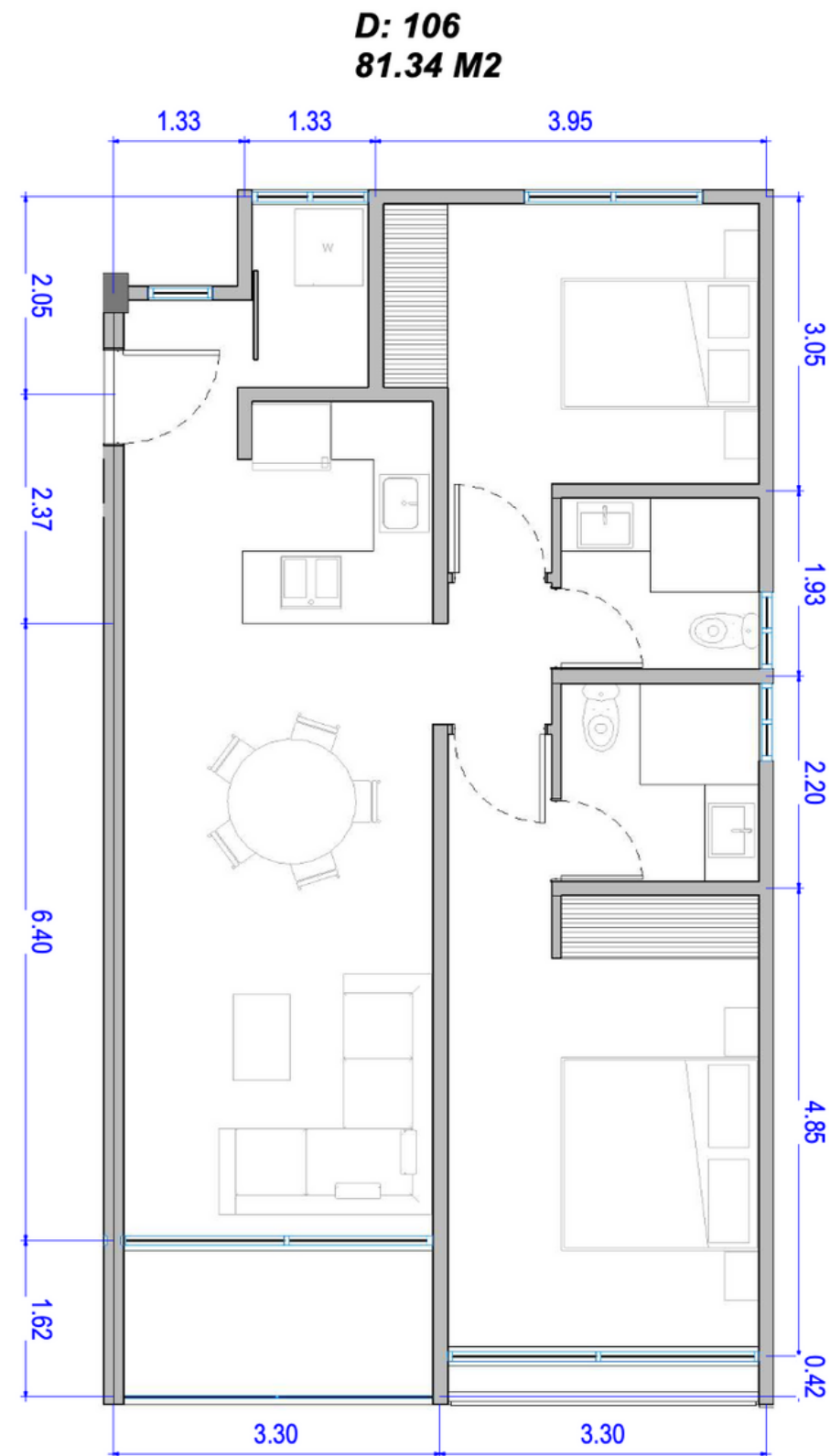
## APT TYPE 5

64.08 M2 LIVING AREA

- 1 BEDROOM
- 1 FULL BATHROOM
- 1 GUEST BATHROOM
- LIVING ROOM/DINING ROOM
- KITCHEN
- LAUNDRY ROOM
- 1 PARKING SPACE







## APT TYPE 6

81.34 M2 LIVING AREA

- 2 BEDROOMS
- 2 FULL BATHROOMS
- LIVING ROOM/DINING ROOM
- KITCHEN
- LAUNDRY ROOM
- 2 PARKING SPACES



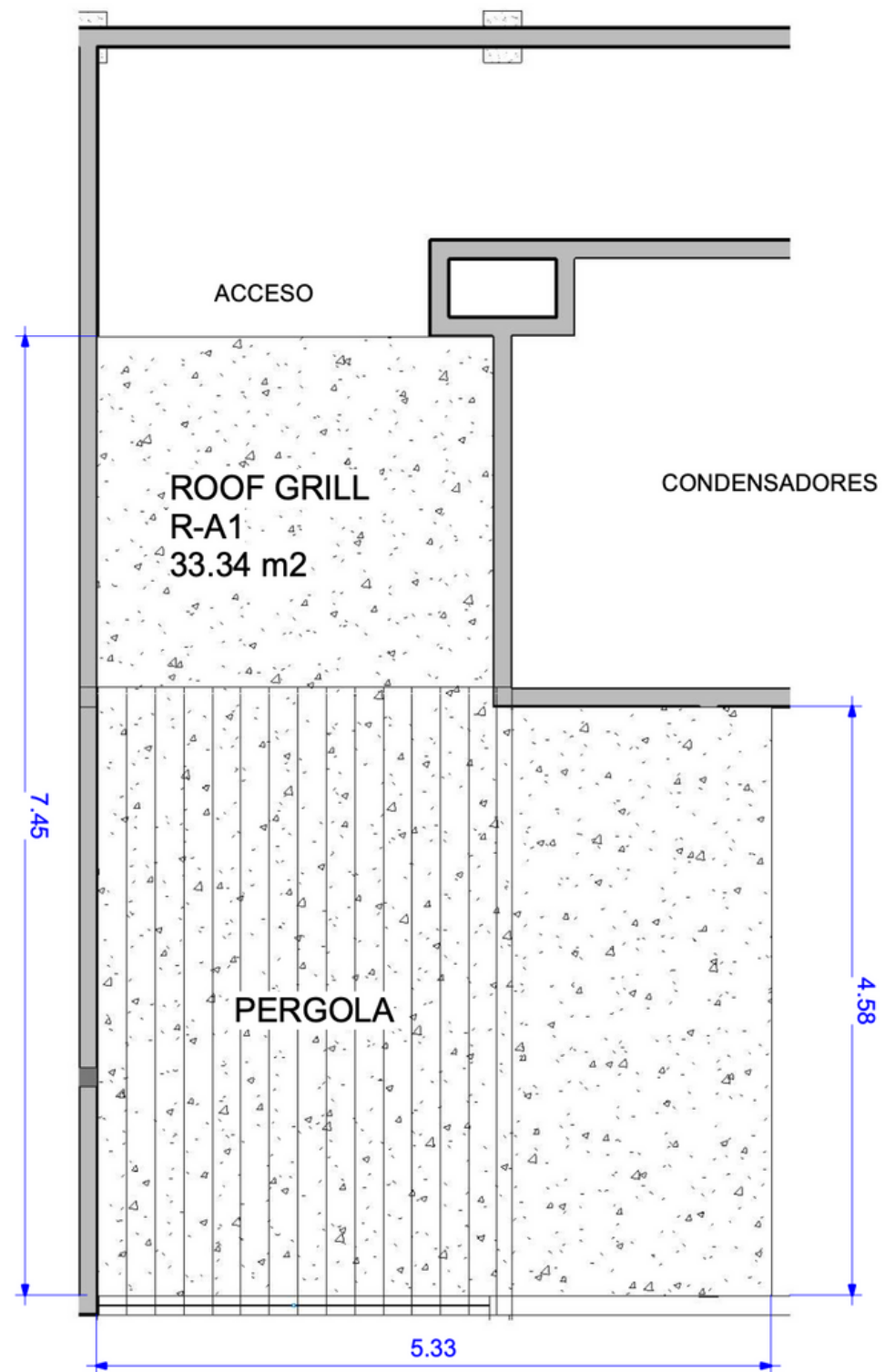


# ROOF GARDEN MODELS



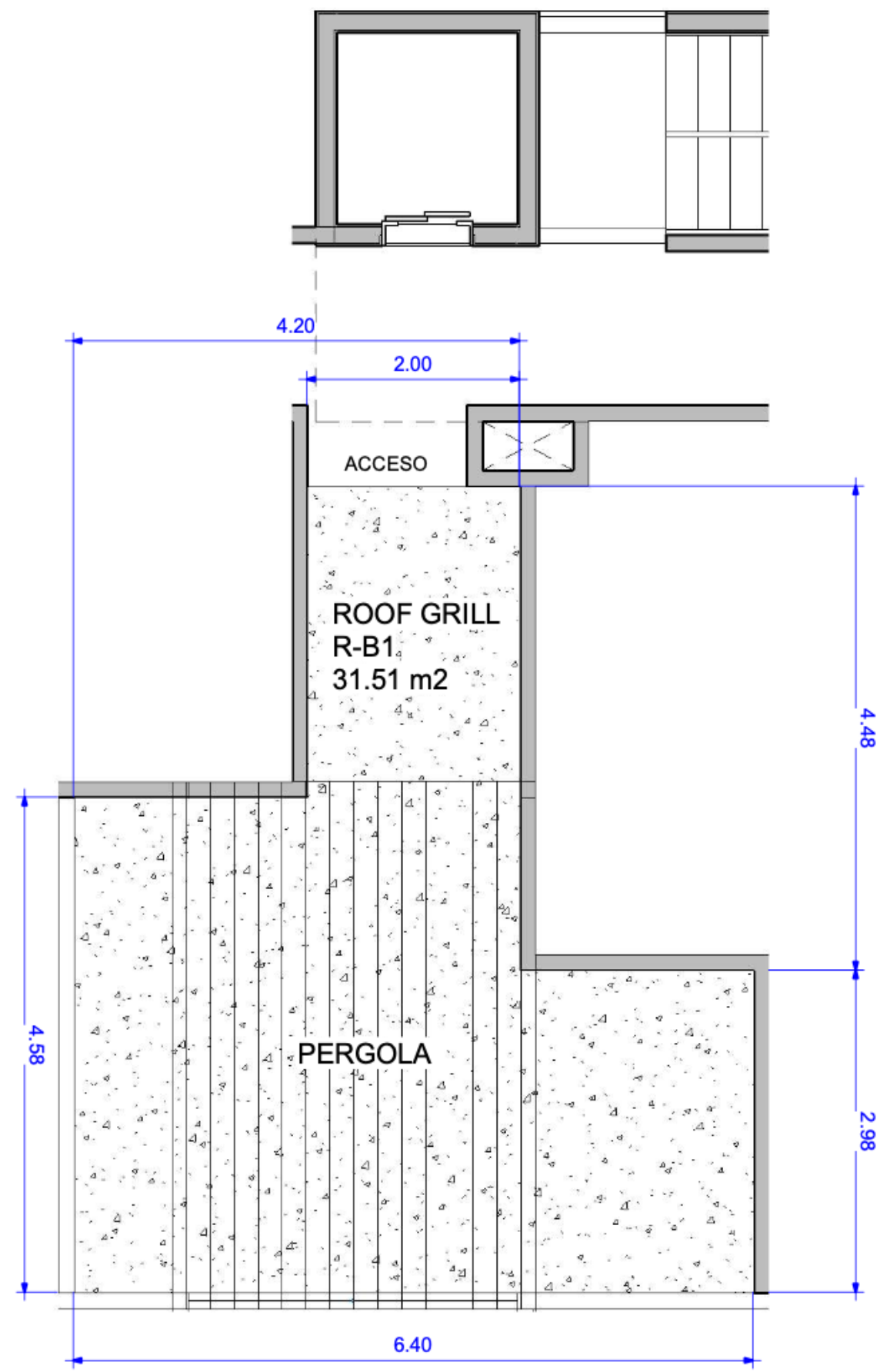
# ROOF GARDEN 1

33.34 M2

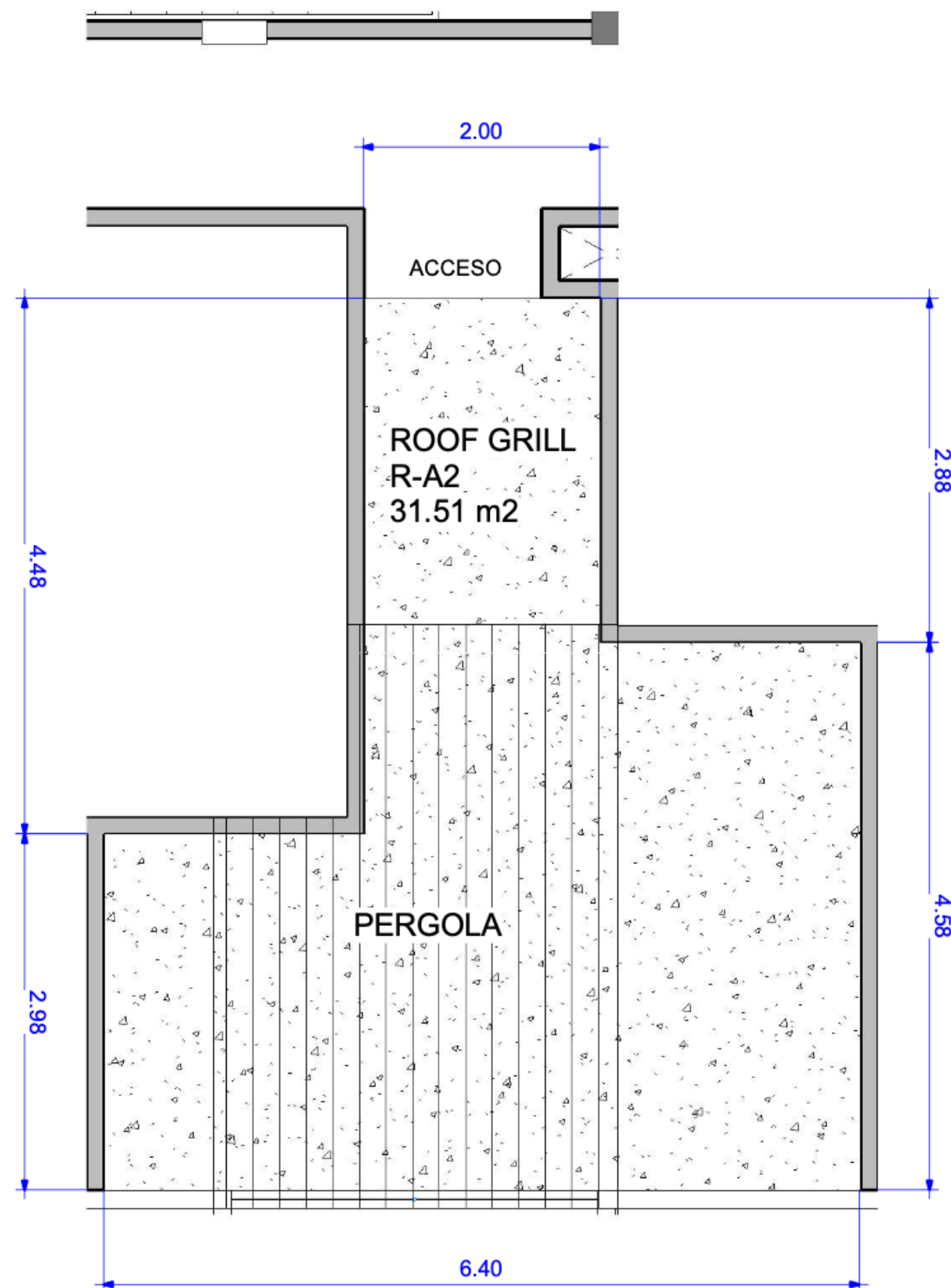


# ROOF GARDEN 2

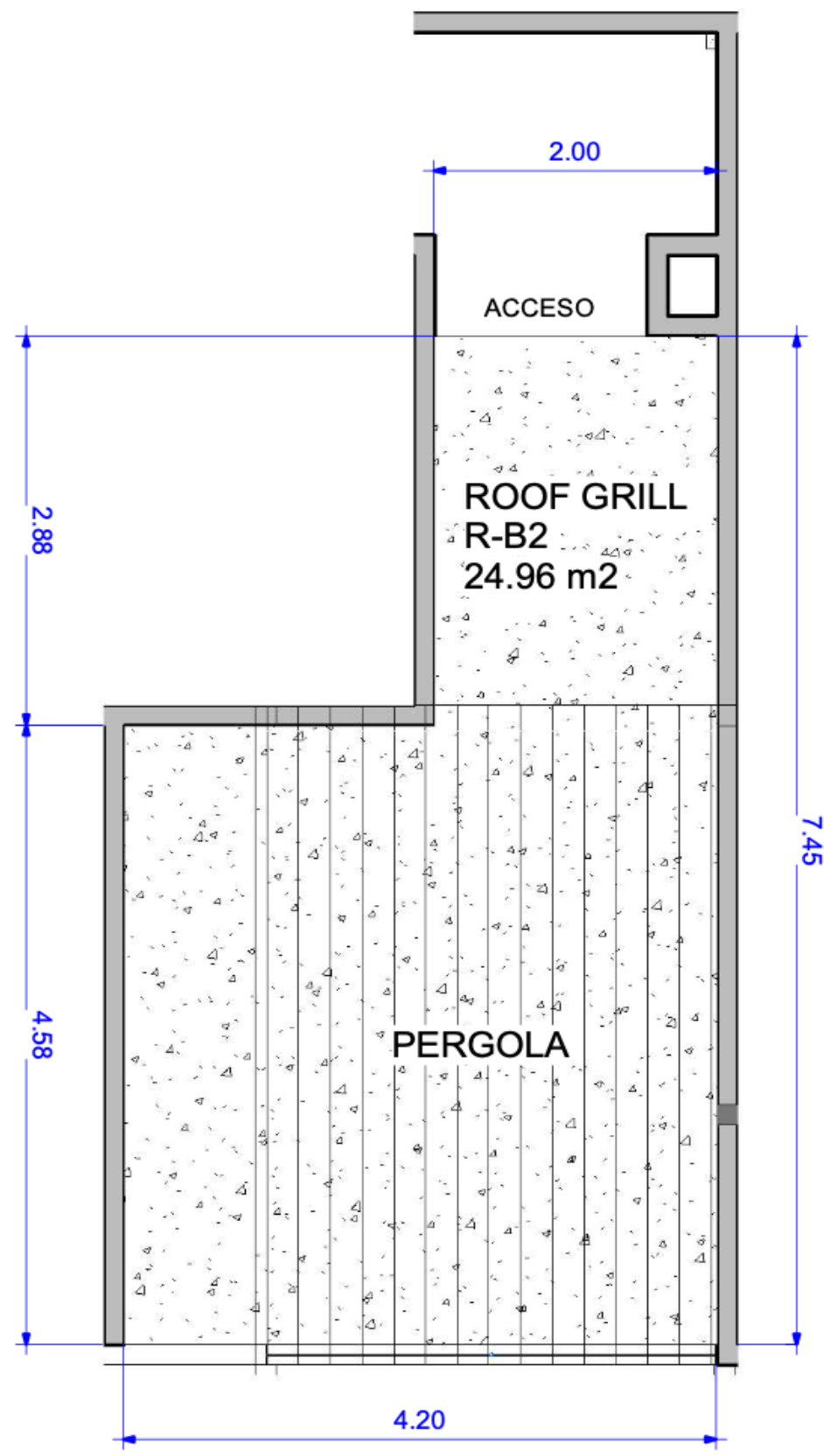
31.51 M2







ROOF  
GARDEN 3  
31.51 M2



ROOF  
GARDEN 4  
24.96 M2

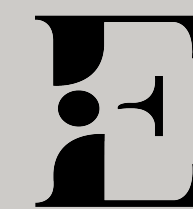




# Live in harmony, live in Elements Apartments.

Discover a lifestyle that connects modernity and design with the natural surroundings of Cancún. Here, the essence of the four elements fuses to offer you a space where nature and elegance meet.

**Welcome to your home at Elements Apartments.**



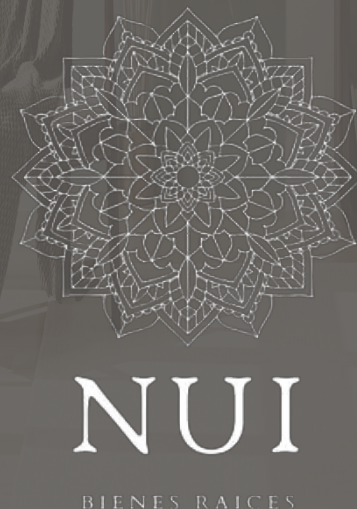
ELEMENTS  
A P A R T M E N T S



# INVEST WITH NUI

At NUI, we have a **proven track record in developing high-quality residential properties**, combining excellence, innovative design, and functionality. Our goal is to create properties that are aesthetically pleasing, practical, and durable—**becoming homes for life**. Each project reflects our commitment to quality and attention to detail, offering **unique spaces tailored to modern needs**. With a highly qualified team, we design **cutting-edge solutions** that maximize comfort and space utilization, always **focused on exceeding the expectations of those who trust us**. When you invest with NUI, you choose quality, design, and an experience backed by our passion for creating exceptional spaces.

At NUI, we strengthen our vision of excellence through **strategic partnerships** with leading companies such as **AICME**, experts in real estate investment and expansion with over 10 years of market experience. Thanks to this collaboration, we combine their market knowledge, financial strategies, and growth focus with our expertise in high-quality residential development. **Together, we offer solid, innovative projects with a rapid return on investment, ensuring solutions that exceed our clients' expectations.**







ELEMENTS  
APARTMENTS